

OPERATIONS MANUAL

For

StreetSync

A Module of ATMS



522 Gillingham
Sugar Land, Texas 77478
Phone: (281) 240-7233
Fax: (281) 240-7238

© Copyright 2021 Cubic | Trafficware
All rights reserved.

Terms of Use Agreement

USE OF THIS SOFTWARE MANUAL IS SUBJECT TO THESE TERMS OF USE.

Agreement

Please read this *User Agreement* carefully before using the information provided in this *Manual*. This Agreement explains the terms and conditions governing the use of this *Manual* ("Terms of Use"), and it is your responsibility to read and understand them. By using this *Manual*, you expressly agree to be bound by these *Terms of Use* and to follow them as well as all applicable laws and regulations governing the *Manual*. If you do not agree to be bound by these *Terms of Use*, you may not access or use this *Manual*. Cubic | Trafficware reserves the right to change these *Terms of Use* at any time, effective immediately upon posting the *Manual* from our company website. By continuing to use the *Manual* after we post any such change, you accept the revised *Terms of Use*. If you violate these *Terms of Use*, Cubic | Trafficware may terminate your use of the *Manual*, bar you from future use of the *Manual*, and take appropriate legal action against you.

Permitted Use

You agree that you are only authorized to read, view and retain a copy of pages of this *Manual* for your own personal use, and that you will not duplicate, download, publish, modify or otherwise distribute the material on this *Manual* for any purpose other than to review product information for personal use or the use of a government or non-profit organization.

No Commercial Use

Users may not use this *Manual* for any commercial purposes such as to sell merchandise or services of any kind. You must obtain our prior written consent to make commercial offers of any kind, whether by advertisements, solicitations, links, or by any other form of communication. Cubic | Trafficware will investigate and take appropriate legal action against anyone who violates this provision.

Copyright

All content included on this *Manual*, including text, graphics, logos, icons, images, and software is the property of Cubic ITS Inc. or its content suppliers and is protected by United States and international copyright laws. This compilation (that is, the collection, arrangement and assembly) of all content on this *Manual* is the exclusive property of Cubic ITS Inc. and is protected by U.S. and international copyright laws. Cubic ITS Inc. reserves the right to revise the pages of the *Manual* or withdraw access to them at any time.

Trademarks

The logo and trademarks that appear throughout the *Manual* belong to Cubic ITS Inc., its affiliates or third-party trademark owners, and are protected by U.S. and international trademark laws. Without express prior written permission, you may not display or use in any manner, the logos or trademarks. Nothing in this *Manual* shall be construed as granting any license or other right to the intellectual property or other proprietary rights of Cubic ITS Inc., its affiliates or any third party, whether by estoppels, implication or otherwise. All contents of the *Manual* are: © Copyright 2021 Cubic ITS Inc. or its licensors. All Rights Reserved.

Disclaimer of Warranty

YOU UNDERSTAND AND EXPRESSLY AGREE THAT YOUR USE OF THE MANUAL AND THE INFORMATION FOUND THERE IS ENTIRELY AT YOUR RISK. CUBIC | TRAFFICWARE AND ITS AFFILIATES AND LICENSORS MAKE NO WARRANTIES OR ANY REPRESENTATIONS OF ANY KIND, EITHER EXPRESS OR IMPLIED, INCLUDING BUT NOT LIMITED TO WARRANTIES OF TITLE OR NON-INFRINGEMENT OR IMPLIED WARRANTIES OF MERCHANTABILITY, FITNESS FOR A PARTICULAR PURPOSE, NON-INFRINGEMENT OR OTHER VIOLATION OF RIGHTS IN RELATION TO THE AVAILABILITY, ACCURACY, VALIDITY, COMPLETENESS, RELIABILITY OR CONTENT OF THESE PAGES AND/OR THE MANUAL. CUBIC | TRAFFICWARE SHALL NOT BE LIABLE FOR ANY DIRECT, INDIRECT, INCIDENTAL, SPECIAL OR CONSEQUENTIAL DAMAGES, LOST PROFITS OR FOR BUSINESS INTERRUPTION ARISING OUT OF THE USE OF OR INABILITY TO USE THIS MANUAL, EVEN IF CUBIC | TRAFFICWARE HAS BEEN ADVISED OF THE POSSIBILITY OF SUCH DAMAGES. TO THE MAXIMUM EXTENT PERMITTED BY LAW, YOU HEREBY RELEASE AND FOREVER WAIVE ANY AND ALL CLAIMS YOU MAY HAVE AGAINST CUBIC | TRAFFICWARE, ITS AFFILIATES AND LICENSORS FROM LOSSES OR DAMAGES YOU SUSTAIN IN CONNECTION WITH YOUR USE OF THE MANUAL.

SOME JURISDICTIONS DO NOT ALLOW EXCLUSION OF CERTAIN WARRANTIES OR LIMITATIONS OF LIABILITY, SO THE ABOVE LIMITATIONS OR EXCLUSIONS MAY NOT APPLY TO YOU. THE LIABILITY OF CUBIC | TRAFFICWARE WOULD IN SUCH CASE BE LIMITED TO THE GREATEST EXTENT PERMITTED BY LAW.

Applicable Law

These *Terms of Use* and all legal issues related to the *Manual* shall be governed by the laws of the State of Texas, without regard to conflict of laws principles. You agree that any dispute involving these terms of use or this *Manual* will be heard in a court with jurisdiction in Fort Bend County, Texas. You further agree that the prevailing party in any legal action will be entitled to recover its reasonable attorney's fees incurred in connection with that action. If for any reason a court of competent jurisdiction finds any provision of these Terms of Use to be unenforceable, the remaining terms will continue in full force and effect.

Entire Agreement

These *Terms of Use* are the final and entire agreement between you and Cubic | Trafficware with respect to this subject and replace any and prior or contemporaneous understandings or agreements, written or oral, regarding the subject matter. Any waiver of any provision of these Terms of Use shall be effective only if in writing and signed by an authorized representative of Cubic | Trafficware.

Table of Contents

Introduction	5
Purpose.....	5
Product Scope.....	5
Overall Description	5
Product Perspective	5
Product Functions	5
Operating Environment	5
Traffic Controller Support	5
StreetSync Versions.....	5
StreetSync Solo.....	5
StreetSync Enterprise	5
Database structure	6
Permanent File	6
Upload File.....	6
Installing StreetSync	7
Starting StreetSync	13
Quick Action Tool Bar.....	13
Selection Drop-Down Menu.....	15
New City/Jurisdiction.....	15
Viewing all City/Jurisdictions	16
Switch to another City/Jurisdiction.....	17
Configuration	19
Sync.....	19
Considerations: Synchronizing Software	21
Initial Screen	22
Controller Section.....	23
Add.....	23
Delete	24
Delete All.....	24
Sort By ID, Sort By Name	25
Database Section	26
View	26
Edit.....	27
Print.....	28
Export.....	29
Save	30
Compare	30
Diagnostics	33
Action Section.....	35
Upload / Download	35
Download Real-Time	36
Realtime Section	37
Scan	37

Software Update Section 38

 Modem String Initialization 38

 Flash Firmware..... 39

Hardware considerations 40

 PC to 2070 Cable Setup..... 40

 NEMA TS2 Communications Port Cable setup 40

Introduction

Purpose

The purpose of the ATMS StreetSync application (StreetSync) is to provide access to traffic controller units that are otherwise disconnected from the central system via a laptop.

Product Scope

The product is an application to access the ATMS database and the traffic controllers in the field with minimal effort. The product will use standard protocols where possible to maximize accessibility to the existing ATMS software environment.

Overall Description

Product Perspective

The application will install on a variety of laptop devices running Windows 7 or higher using serial connectivity.

Product Functions

The major functions in the app include:

- One-click application installation
- “Connection-less” Accessibility to ATMS
- List all available controllers
- View/Edit each available controller’s database
- Single action menu to provide access to all functions
- Upload database from a controller
- Download database to a controller
- Compare changed database parameters within a controller
- Retrieve most recent controller databases from the central system
- Transfer recent controller uploads to the central system
- Download current time-of-day to a controller
- Download firmware to Cubic | Trafficware Controllers and MM516 MMU’s
- Create, save and access multiple cities and/or jurisdictions

Operating Environment

The operating environment will be Windows 7 or higher, running on a variety of PC devices.

Traffic Controller Support

The app will support both TS2, 2070 and ATC traffic controllers containing Cubic | Trafficware software/firmware.

StreetSync Versions

There are two versions of StreetSync available as described below. Please contact your Cubic | Trafficware representative for more information.

StreetSync Solo

This version is used for standalone applications and does not interface directly with ATMS. It is intended for agencies that want to keep database information on isolated controllers.

StreetSync Enterprise

This version is used with agencies that have ATMS and want a laptop interface for isolated controllers that are not communicating on their system.

Database structure

The key to understanding the ATMS StreetSync file system is how the system protects the Permanent File (last successful download through the communication system). The system performs a verification by uploading the controller to the Upload File and comparing the upload with the Permanent File. The verify procedure is used to prevent edit changes at central from being copied over valid changes made in the field through the keyboard.

Permanent File

ATMS saves a copy of the last successful download to the Permanent File to maintain an accurate copy of each controller database in the field. A separate Permanent File for each controller is stored in the /nazserv/data directory on the server with a .prm file extension.

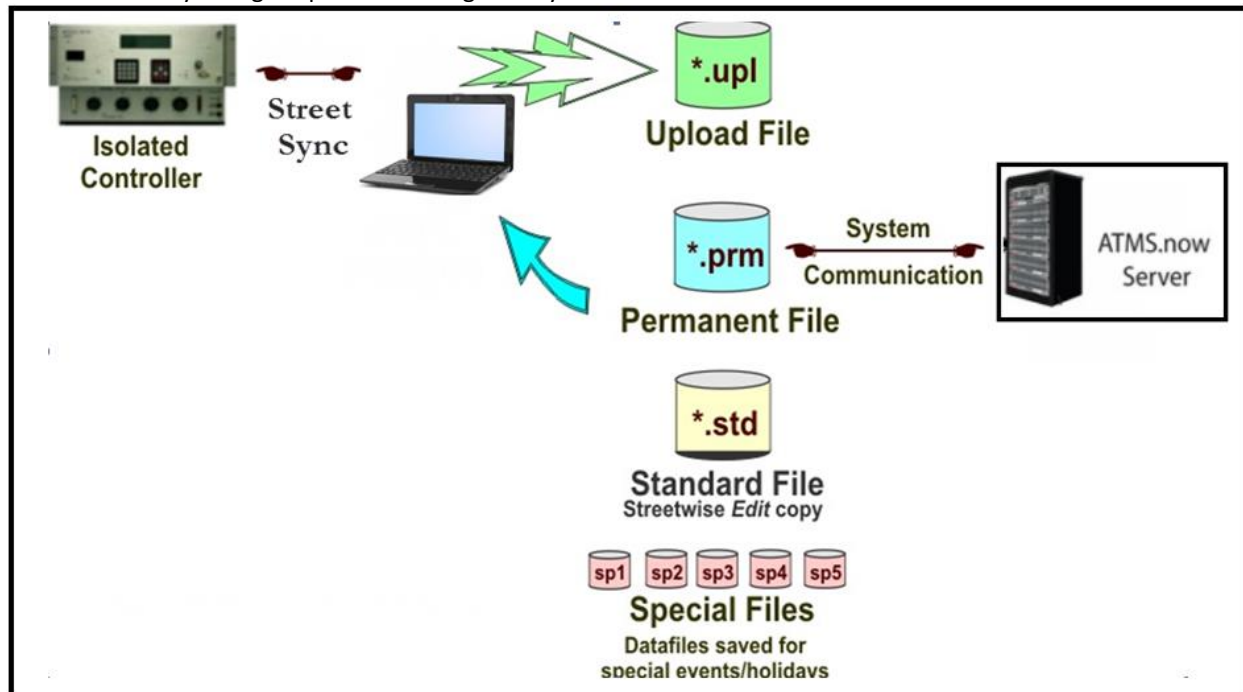
The Permanent File is transferred to StreetSync during the synchronization procedure. This insures that StreetSync carries the last successful download to the field.

The PC which contains StreetSync stores the .prm files in the directory /nazserv/data. All Data which is edited using StreetSync is saved on the /nazserv/data directory on the StreetSync PC. When editing is completed, the updated .prm file is then time stamped.

Upload File

StreetSync saves a copy of the controller database uploaded by the system to the Upload File on the ATMS server after synchronization with the ATMS server. All Data which is edited using StreetSync is also stored in the Upload file on the ATMS server. When editing is completed, the file is then time stamped. A separate Upload File for each controller is stored in the /nazserv/data directory on the ATMS server with an .upl file extension.

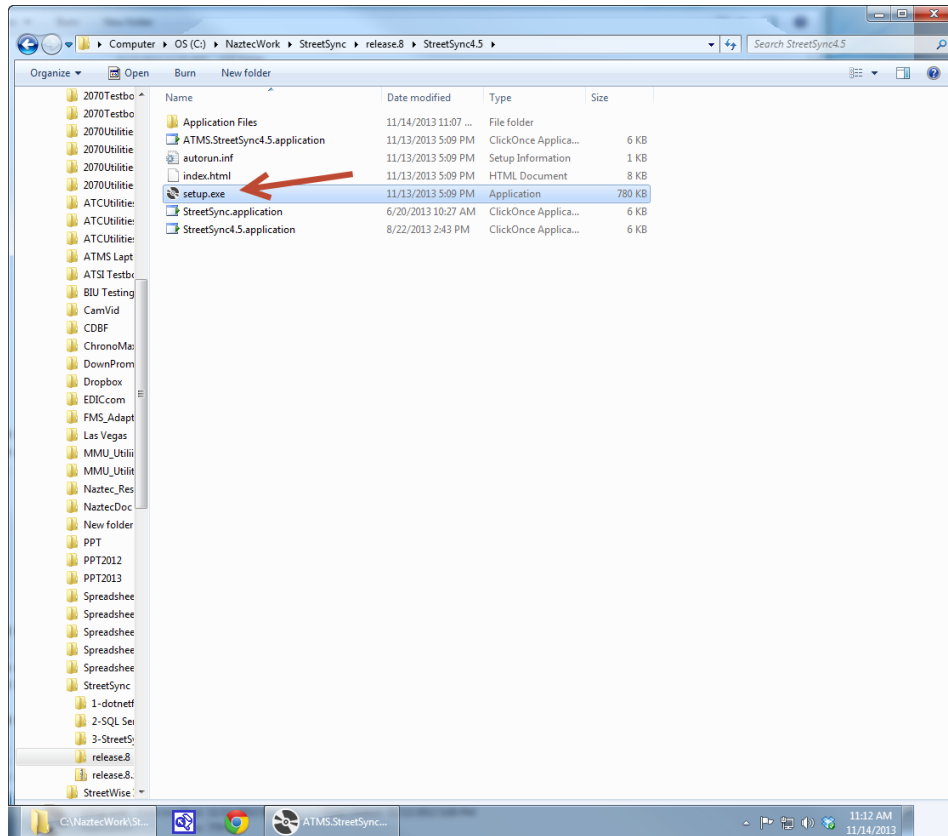
Keep in mind that the Permanent and Standard Files are protected from all field uploads in ATMS and from the StreetSync synchronization procedure. Therefore, in ATMS the user is required to manually copy the Upload File to either the Standard or Permanent to commit any changes uploaded through the system.



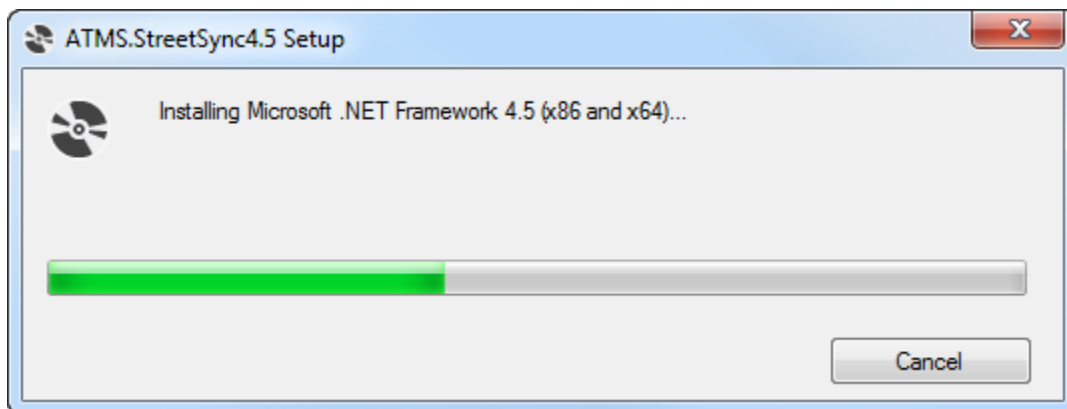
Installing StreetSync

NOTE: To properly install StreetSync using the Microsoft toolset, you must connect your device to the Internet. After installation, Internet access is not necessary. If Internet access cannot be achieved, contact Cubic | Trafficware technical support for further installation instructions.

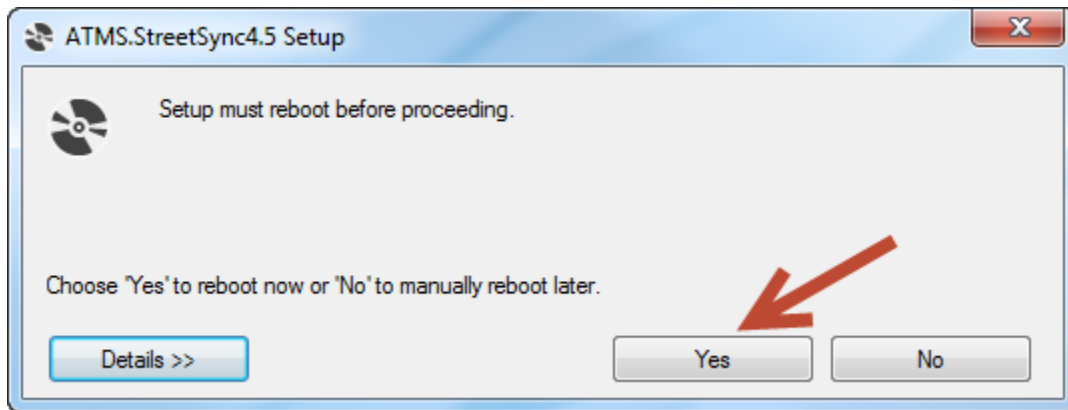
1. The CD provided by Cubic | Trafficware should automatically start the install of StreetSync. If not browse the CD and run the file labeled **setup.exe** to begin the installation.



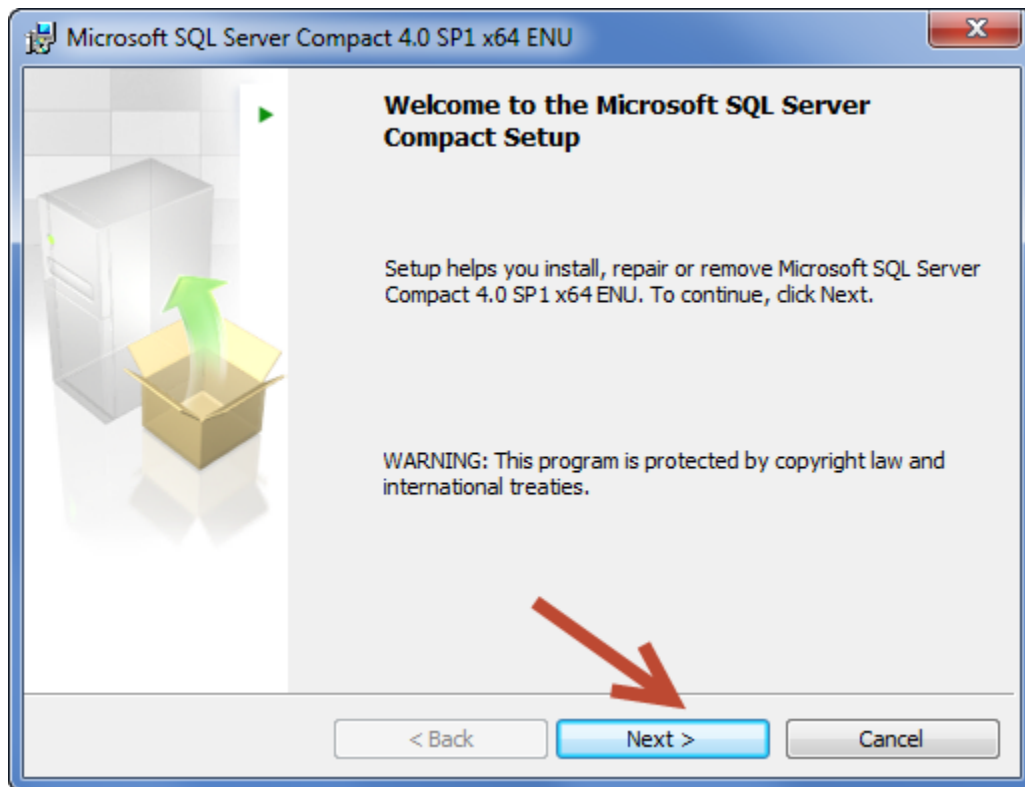
2. The setup will begin and you should see the screen below while StreetSync is installing.



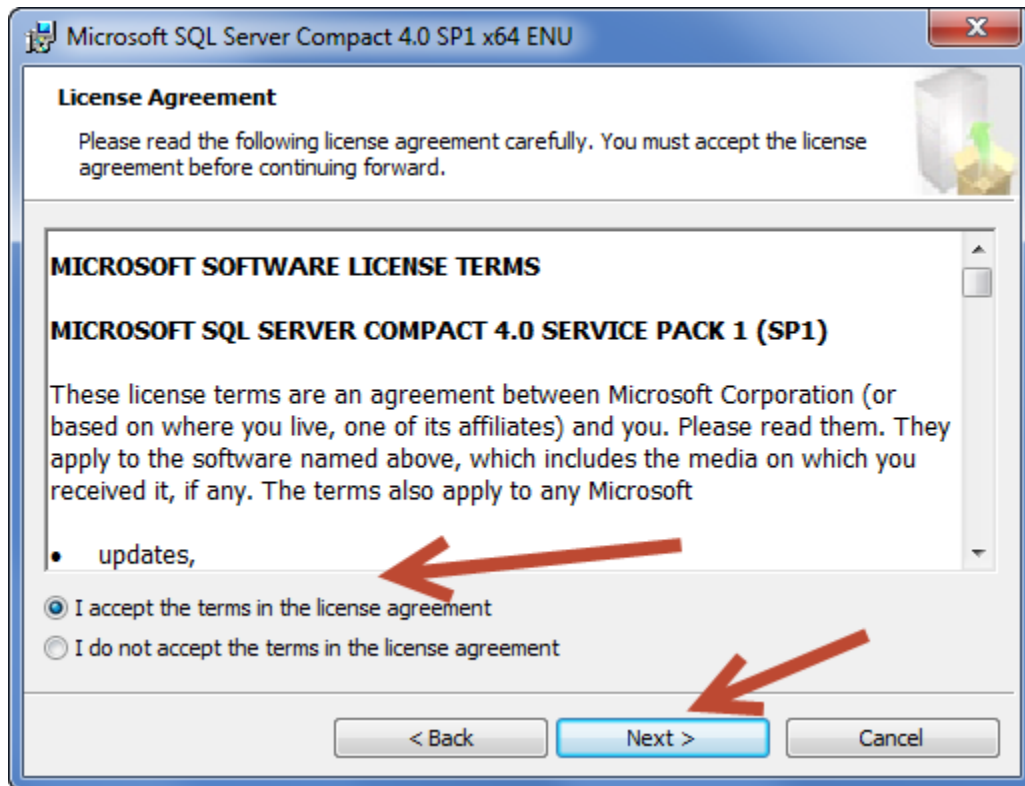
- When the initial installation is completed the following screen will request a hardware reboot. Please answer **Yes** to reboot your PC, laptop, or tablet.



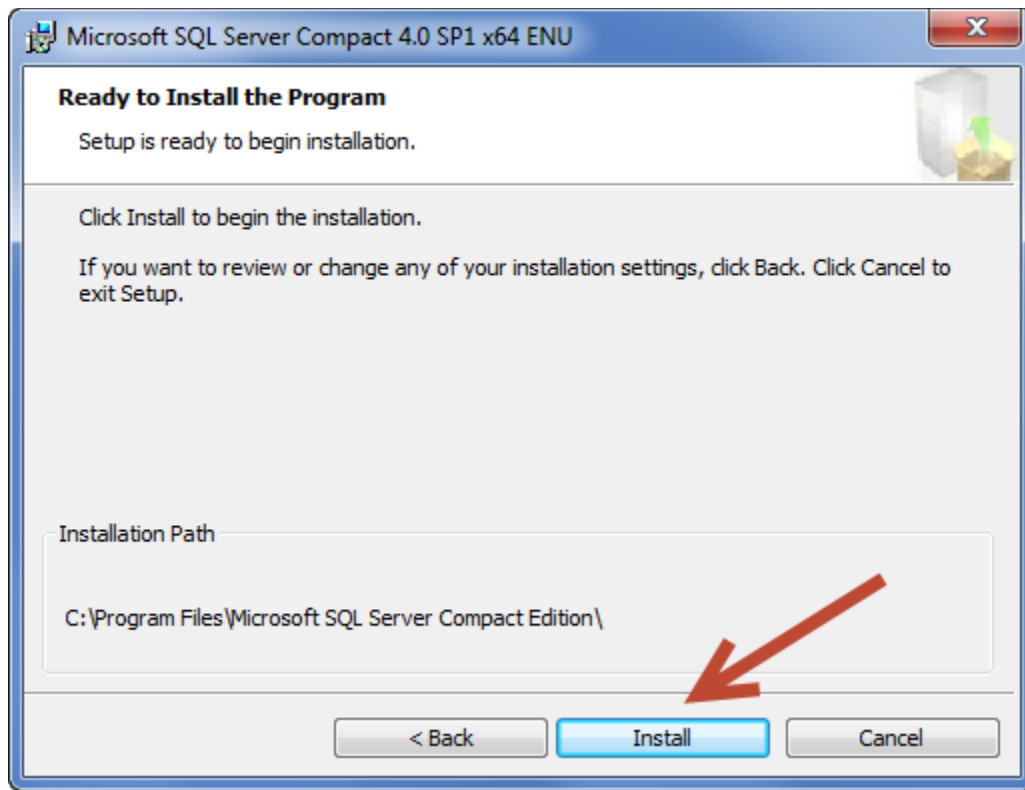
- Upon restart the following screen may be displayed depending on what has been previously installed on your particular PC/Laptop/Tablet computer. If this screen is displayed then the setup will now install Microsoft SQL Compact Database software otherwise it has previously been installed. If this screen is not displayed then the setup software will skip to step 10 below.



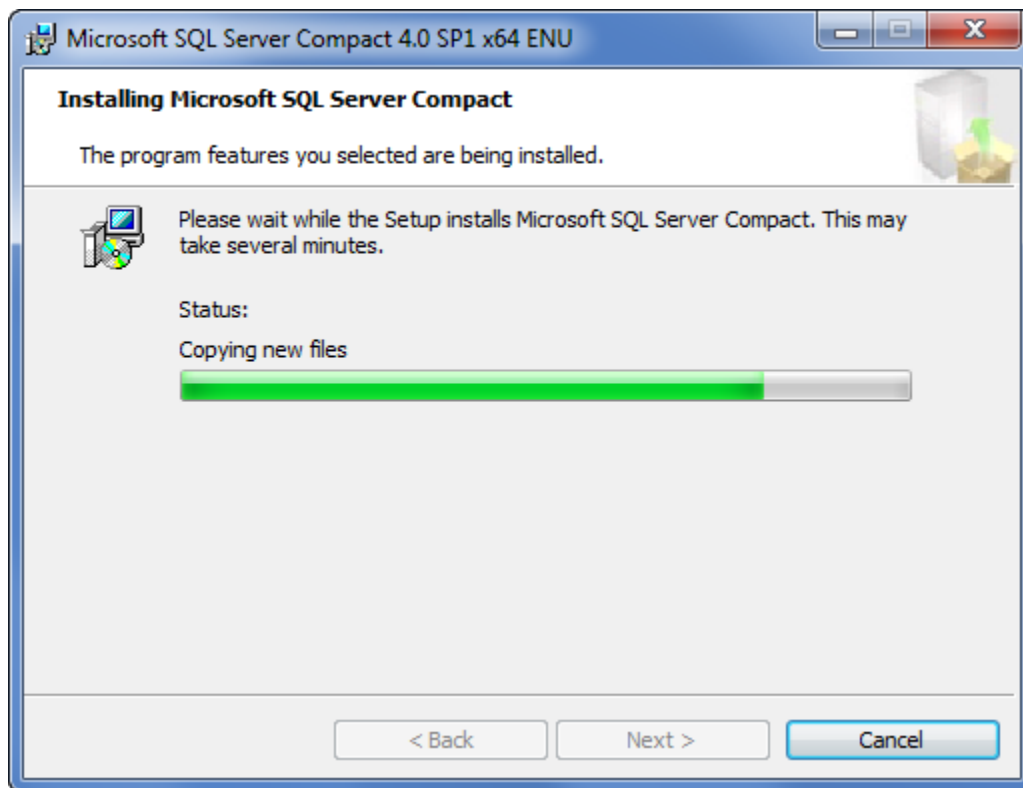
5. Select Next to continue.



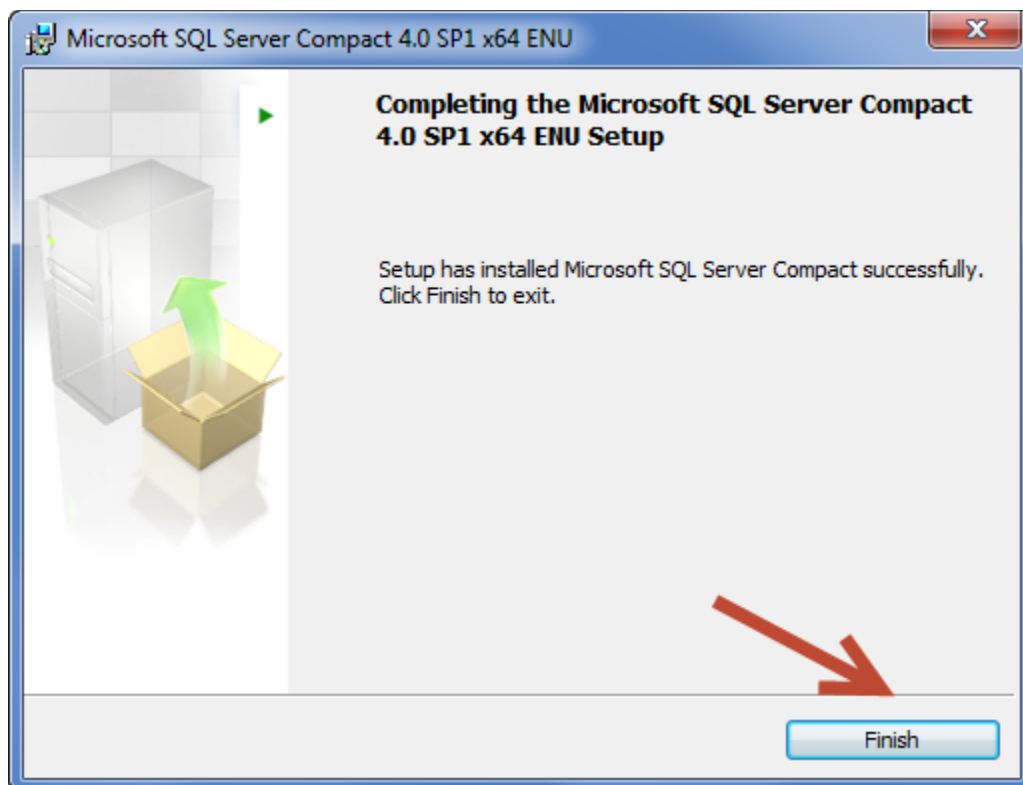
6. Accept the License Agreement and select Next to continue.



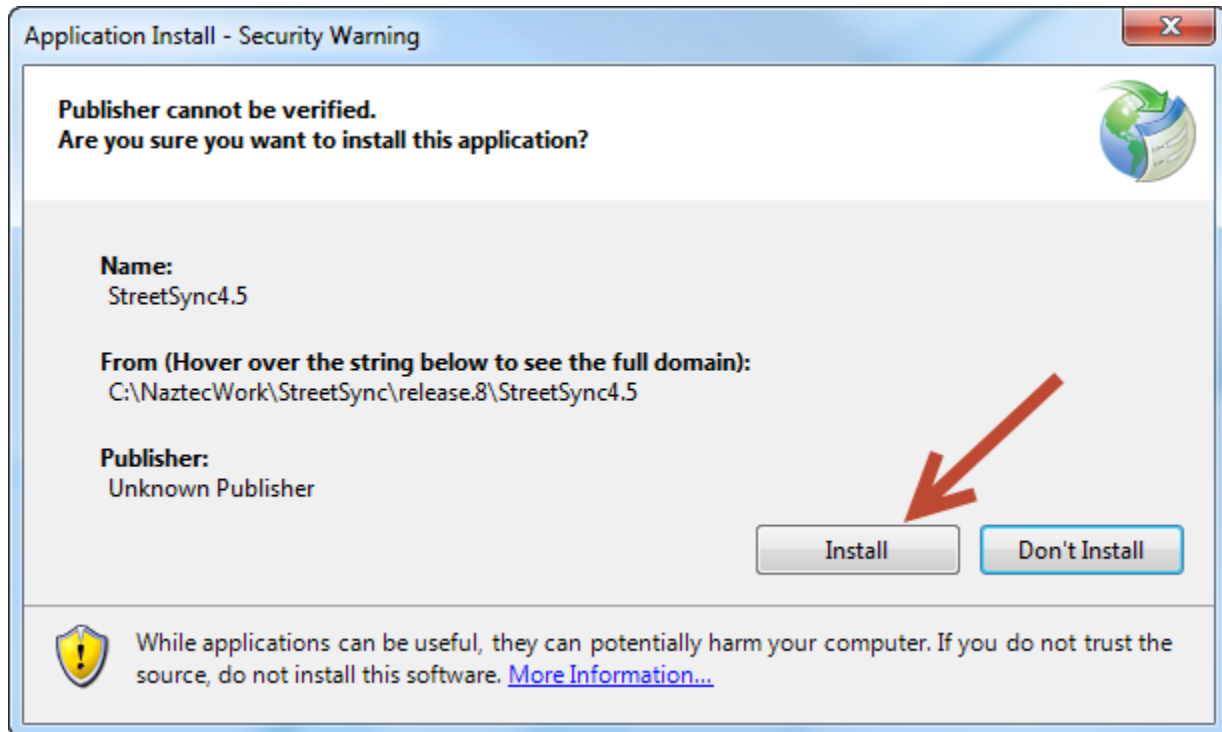
7. Select Install to install the SQL Compact Database software.



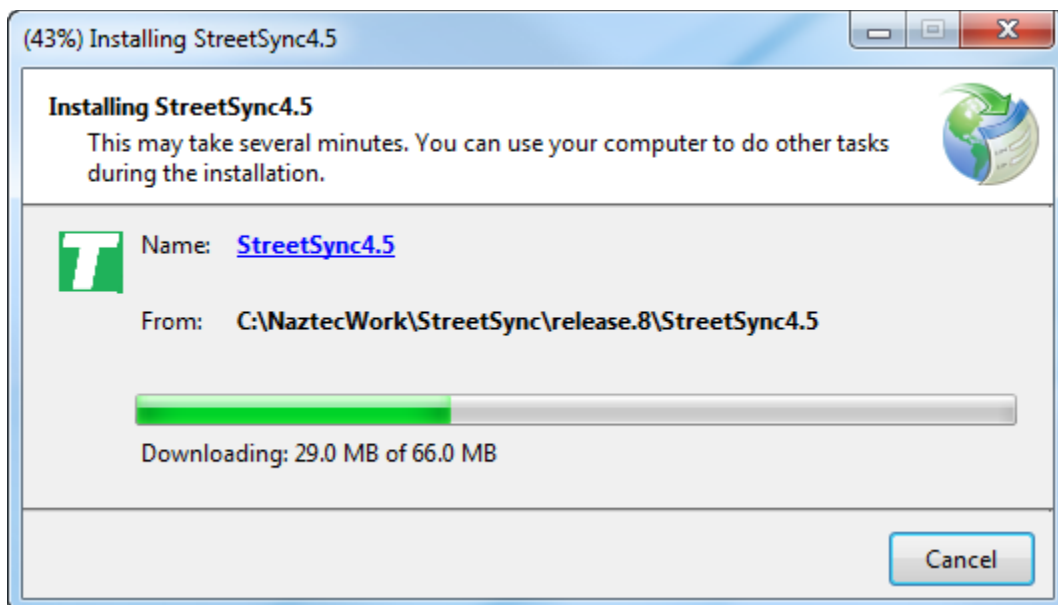
8. When completed, the following screen will be displayed.



9. Select Finish to complete the Microsoft SQL Compact Database software.
10. The following screen will automatically be displayed. If not, run Setup again to finish the StreetSync Installation.



11. While Installation is occurring, the following screen will be displayed.

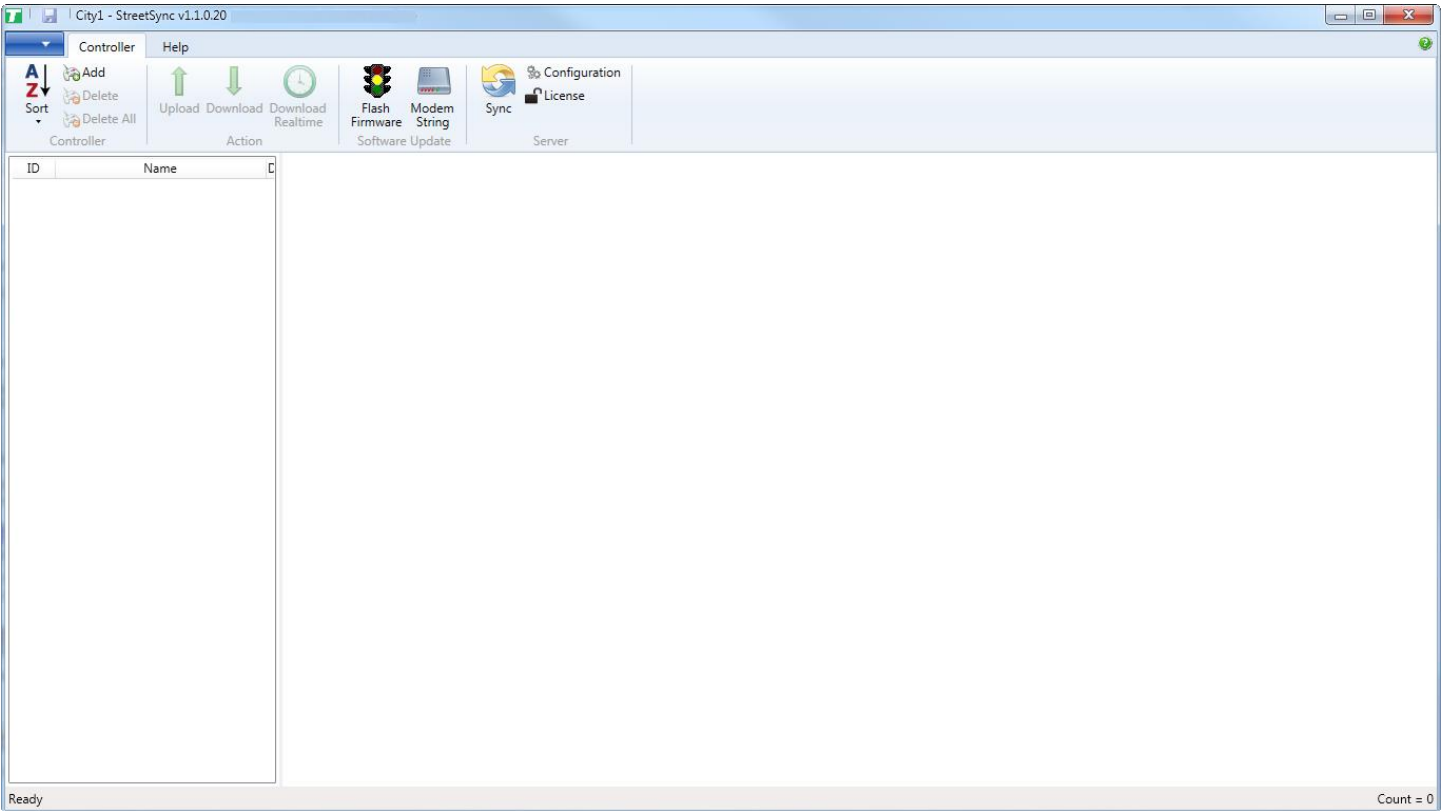


12. When installation is completed StreetSync will automatically start and the splash screen below will be displayed.



Starting StreetSync

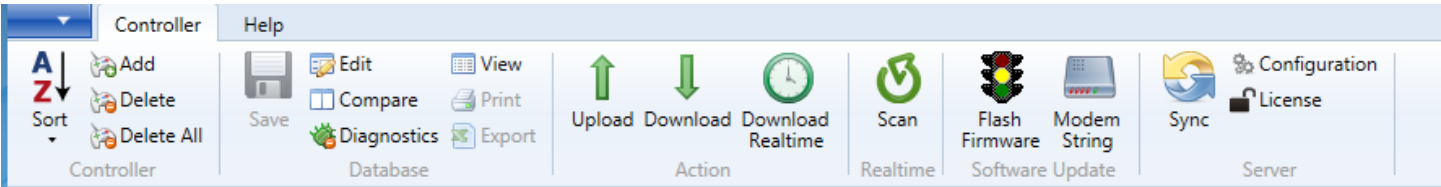
When you first start StreetSync the following screen will appear.



You must now license the firmware via the tool bar.

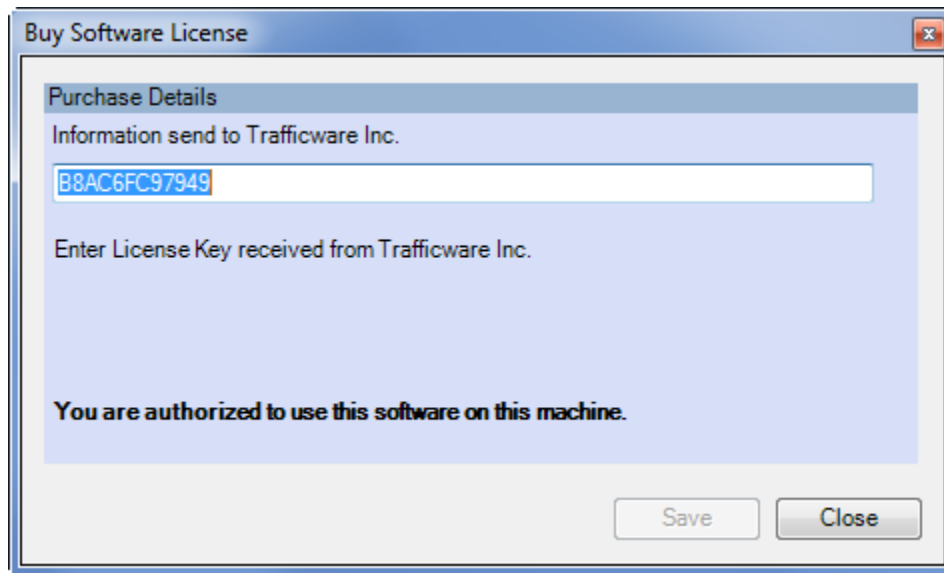
Quick Action Tool Bar

There is a quick access toolbar on the top of the screen that allows you to access the controller databases, as shown below.

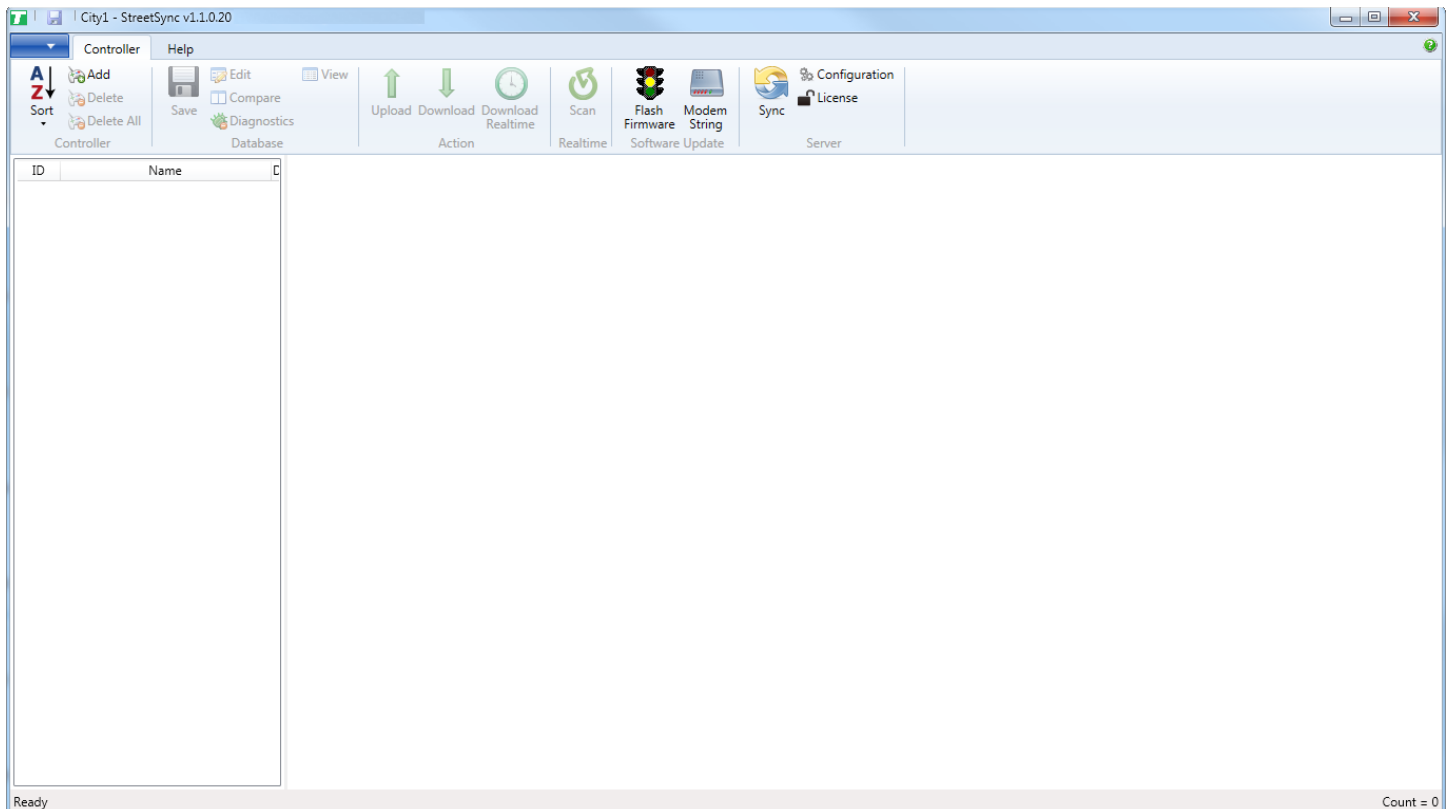


License

Each time you install StreetSync on a PC you need to license it with Cubic | Trafficware. The following screen will appear for you to enter and validate your license. *Please contact your Cubic | Trafficware representative to acquire a license.*

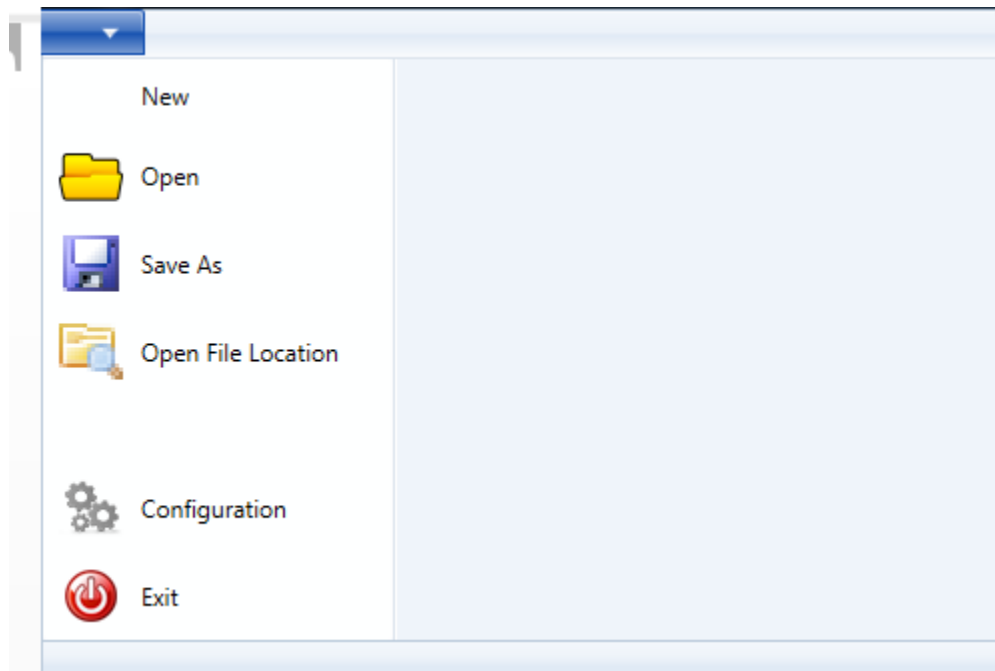


Once licensed, the following screen will appear:



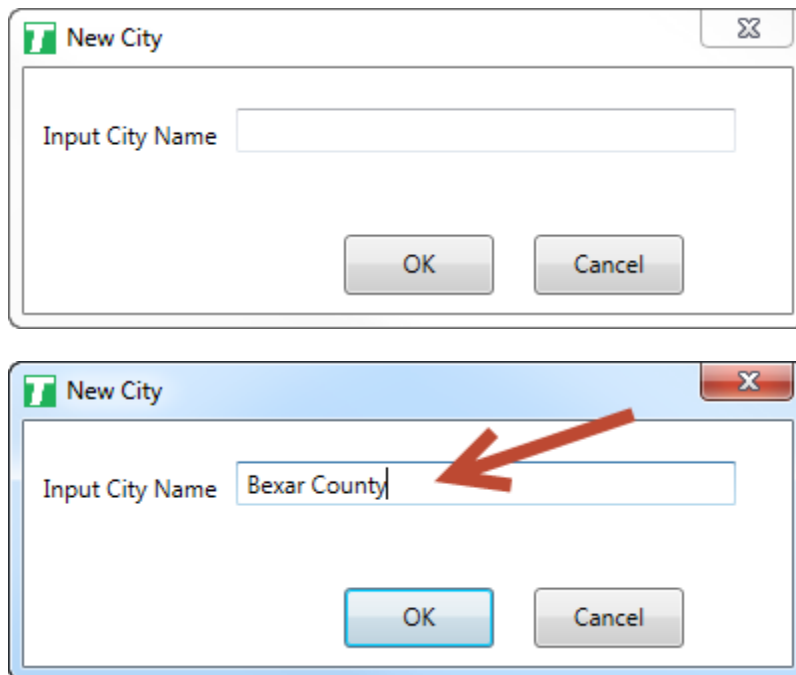
Selection Drop-Down Menu

StreetSync allows the agency to be able to save multiple jurisdictions to separate StreetSync Files. This can be helpful for larger agencies.

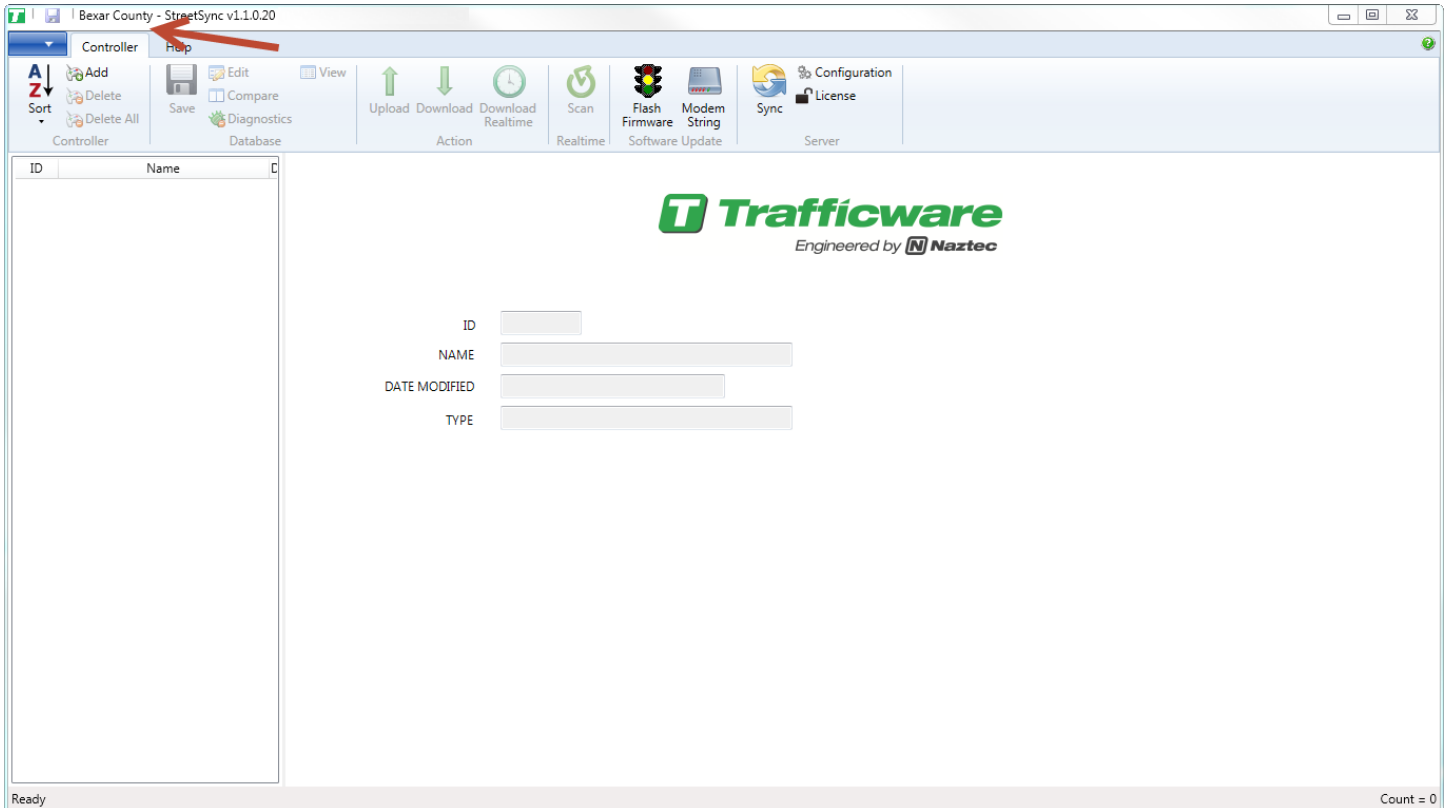


New City/Jurisdiction

Whenever you bring up StreetSync for the first time you **must** create a city/jurisdiction. To create a new city/jurisdiction select **New** and the following screen will come up for you to enter the City, County or Jurisdiction name.

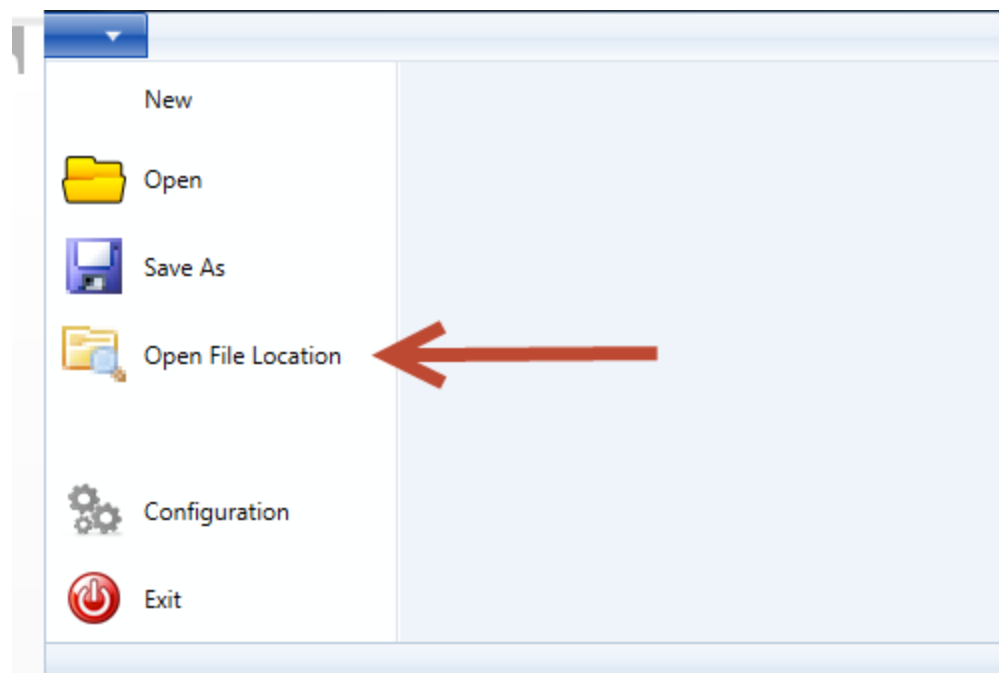


Once the new city/jurisdiction is created, the title bar will change to reflect the file.

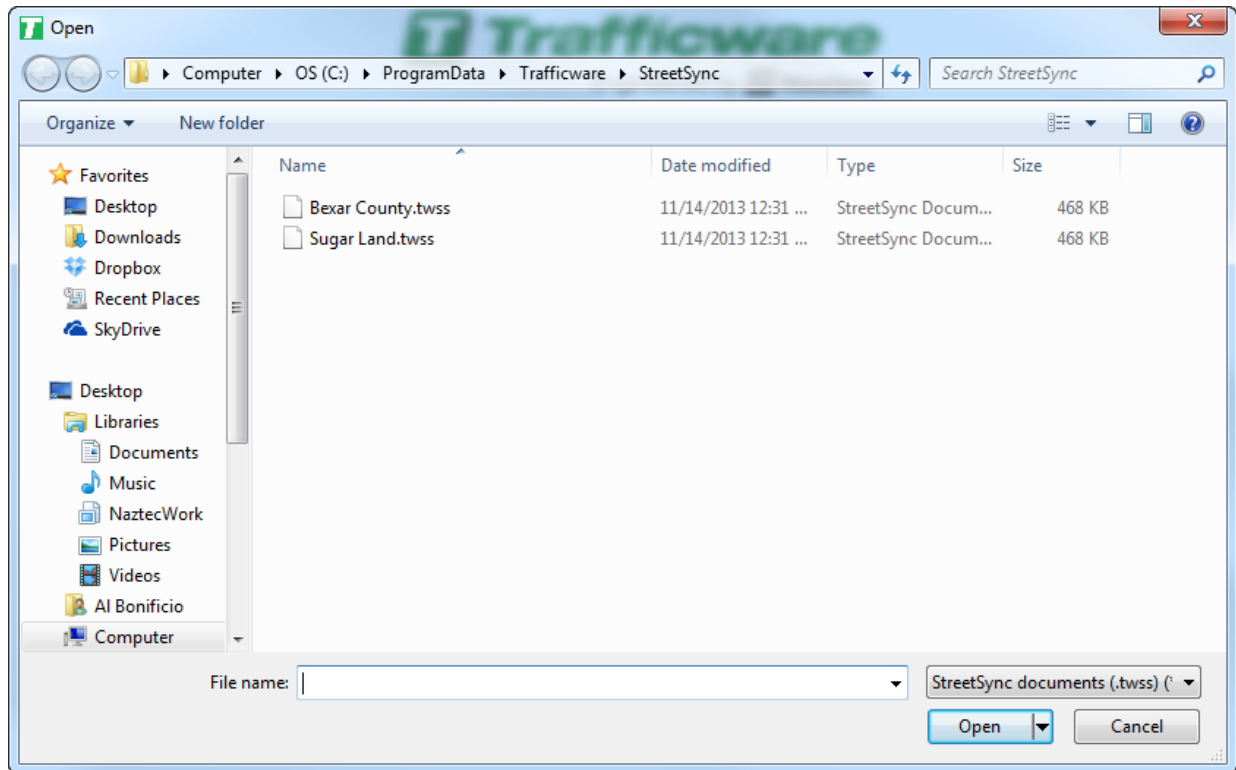


Viewing all City/Jurisdictions

Go to the Selection Drop Down menu and choose **Open File Location**.

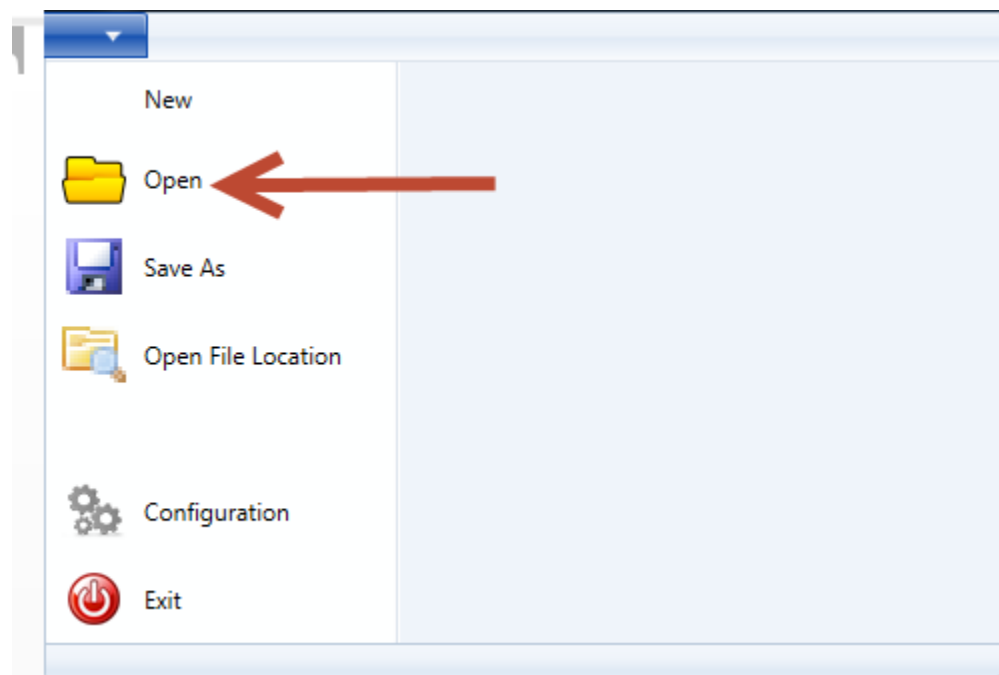


The following browser screen will be displayed.

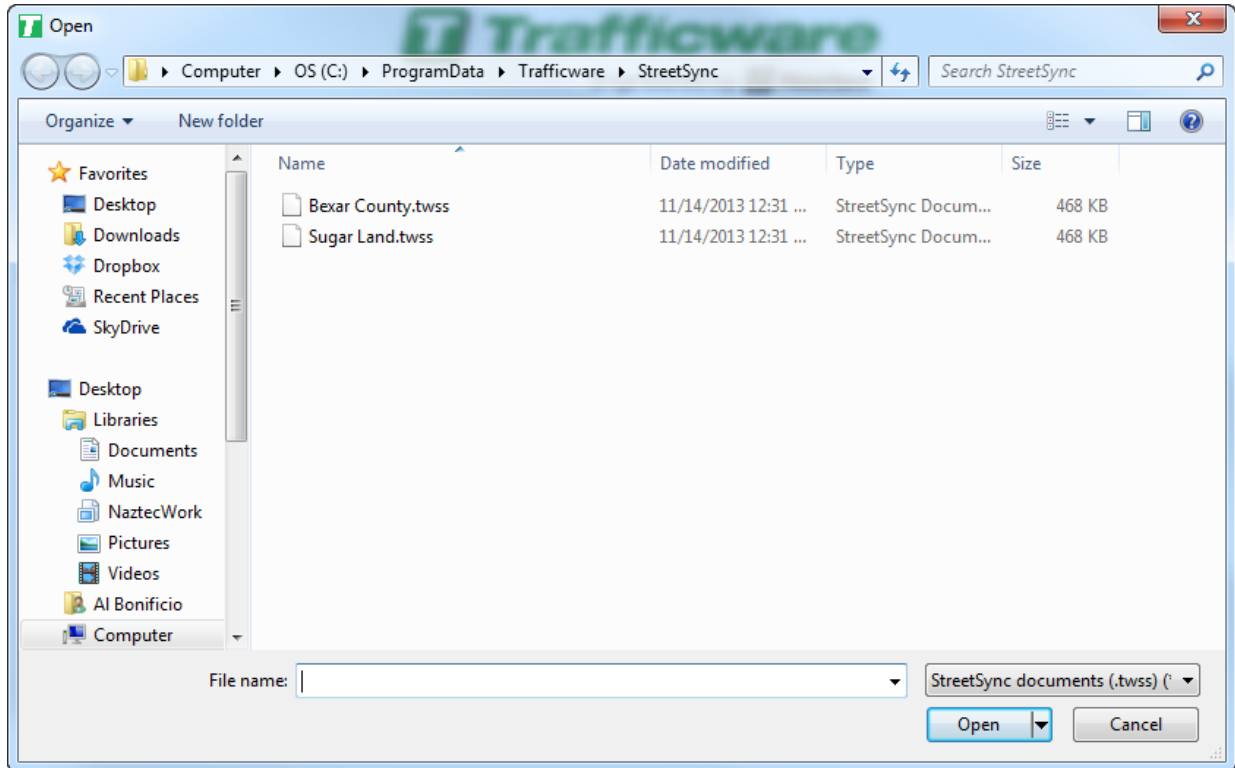


Switch to another City/Jurisdiction

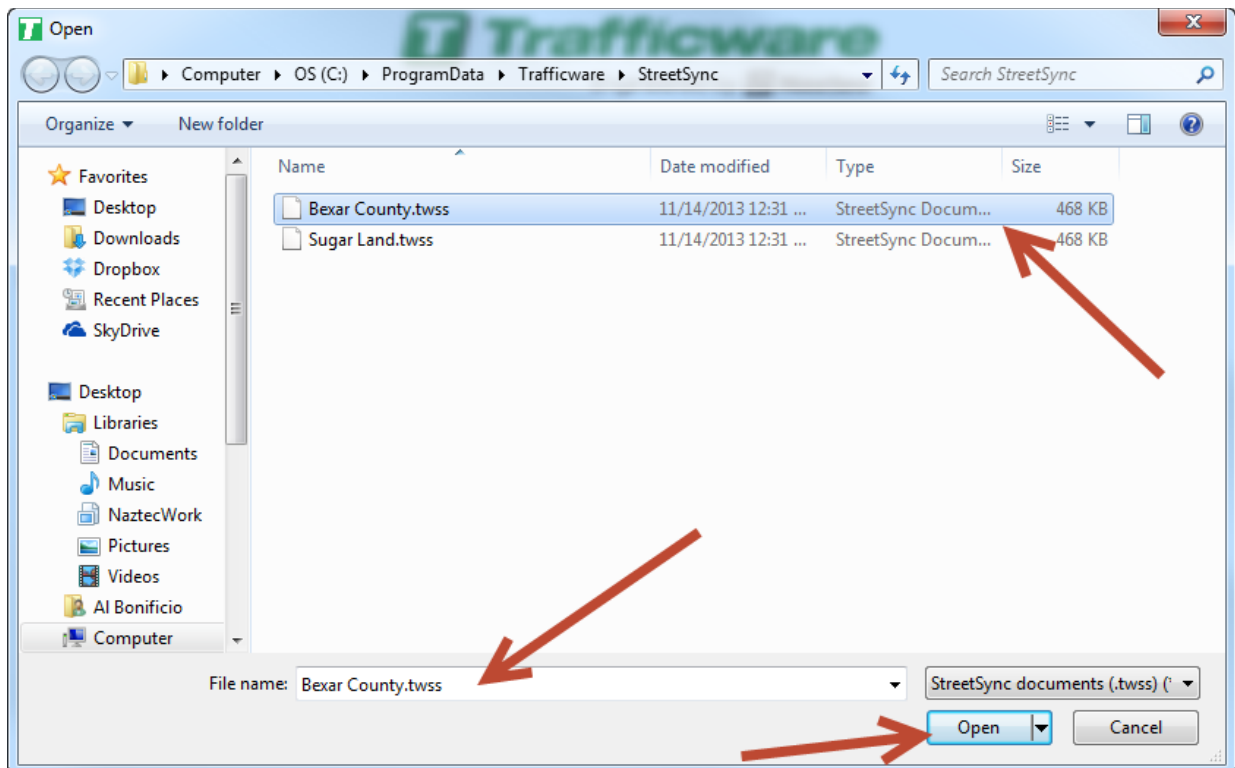
Go to the Selection Drop Down menu and choose **Open**.



The following browser screen will be displayed.



Note: Each city created has the extension .twss which will contain the database information for the city/jurisdiction. Select and open the file you want to access.

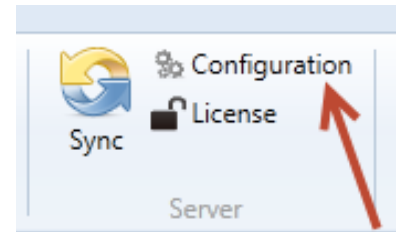


Once you have created a City/Jurisdiction you are ready to configure StreetSync for the interface to ATMS or to create standalone controllers.

Configuration

From the Toolbar you must first configure StreetSync to access ATMS by using the configuration button in the server section.

The configuration screen will allow the user to choose the ATMS **Server** used to get the controller list during the Sync Action and the **Port** number of that server. In addition, the user will be able to set up the **COMM Port** and the **Baud** rate to be used for the laptop device that will connect to the controller. The user can also set up a different baud rate (**Flash Baud**) when "Flashing" firmware to a TS2 controller or MMU. Finally, the user should set up The Flash Firmware Message Length to insure that the headers are sent to the controller.



Configuration

Configuration Details

Server: 192.168.104.109

Port: 80

Baud Rate : 38400

COM Port: COM3

Flash Baud: 57600

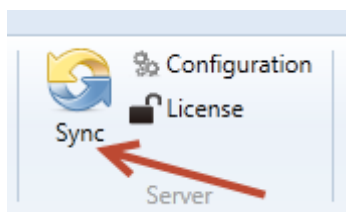
Message Size: 1024 (Down prom message data length)

Comm Channel: RS232 (selected), RS232, Bluetooth

Save Close

NOTE: The Baud Rate and Flash Baud Rate for an MMU should be set to 9600 and the Message Size should be set to 512.

Sync



When the user clicks the Sync Action in the server section, the system will display the Sync action item as shown below.

Server Synchronization

Synchronize with Server...

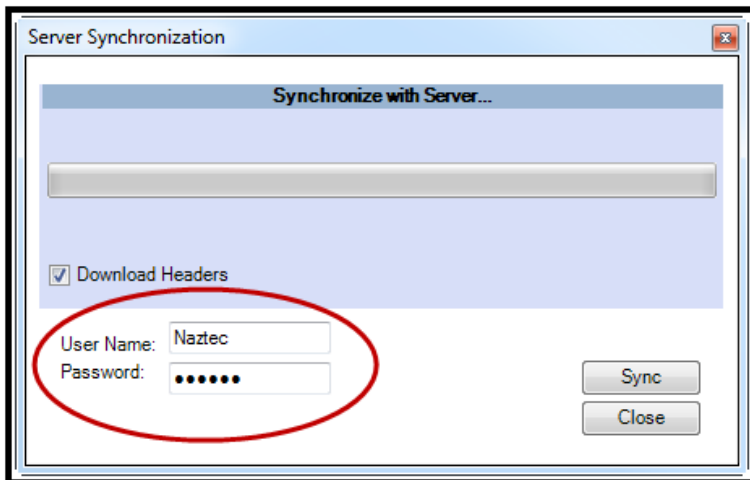
☐ Download Headers

User Name:

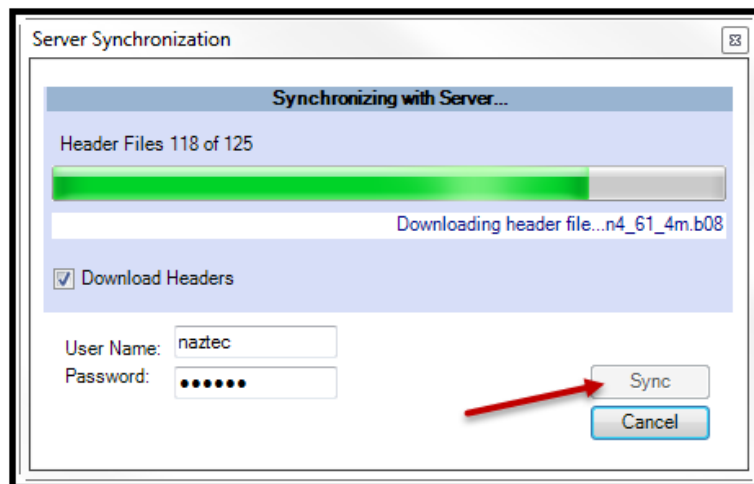
Password:

Sync Close

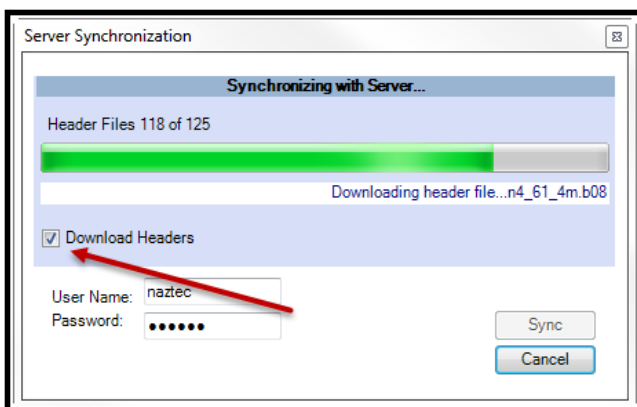
Logging into the ATMS server is required for syncing. In addition, the log-in will reflect the jurisdictional control that is set up in ATMS. Therefore, by logging-in the user's StreetSync database will only synchronize the databases that they are allowed to use. The user must provide a username and password as shown below.



Selecting Sync will begin the Synchronization process. While the Synchronization process occurs, a progress bar indicating how much of the controller data set has been synchronized with the server. The user may cancel the operation at any time.



Please note that the user can select Download Headers if it is desired to download firmware to TS2 controllers. StreetSync will search for the server directory **...Naztec/Nazserv/Downprom** for the TS2 firmware data and header files and place it in the **Downprom** folder of the StreetSync City directory.

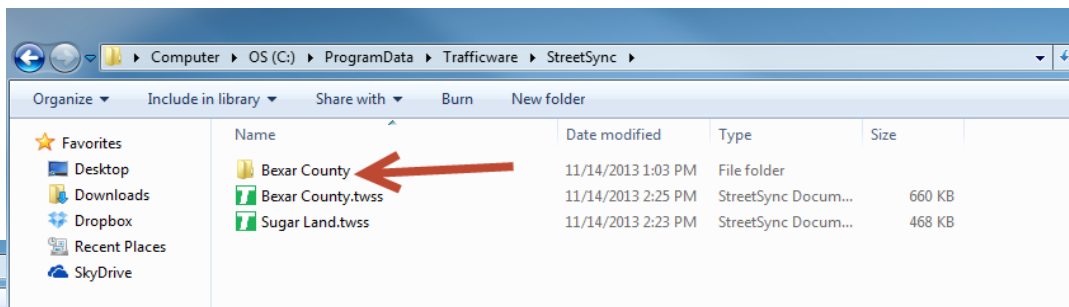
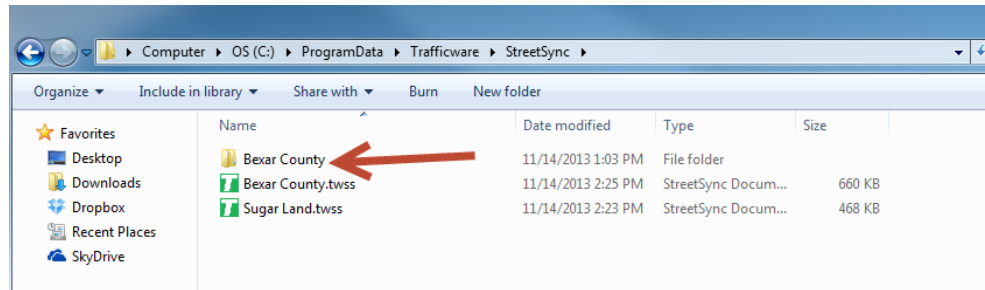


When the Sync is completed, a list of controllers will be displayed.

Considerations: Synchronizing Software

For existing controllers, the synchronization logic first compares the timestamps of the Upload file in ATMS with the “Last Updated” timestamp in ATMS StreetSync. If the “Last Updated” timestamp in StreetSync is newer than the Upload file in ATMS, the controller settings from StreetSync are copied to the Upload file of the corresponding controller in ATMS. If the Upload file in ATMS is equal to or newer than the “Last Updated” timestamp in StreetSync, then the timestamp of the Permanent file in ATMS is compared to the “Last Updated” timestamp in StreetSync. If the timestamp of the Permanent file in ATMS is newer than the “Last Updated” timestamp in StreetSync, then the Permanent file of the controller in ATMS is copied to StreetSync. Finally, if the controller name or type is different between ATMS and StreetSync, then the Permanent file of the controller in ATMS is copied to StreetSync.

Once synchronized StreetSync will create folders with the data as shown below.

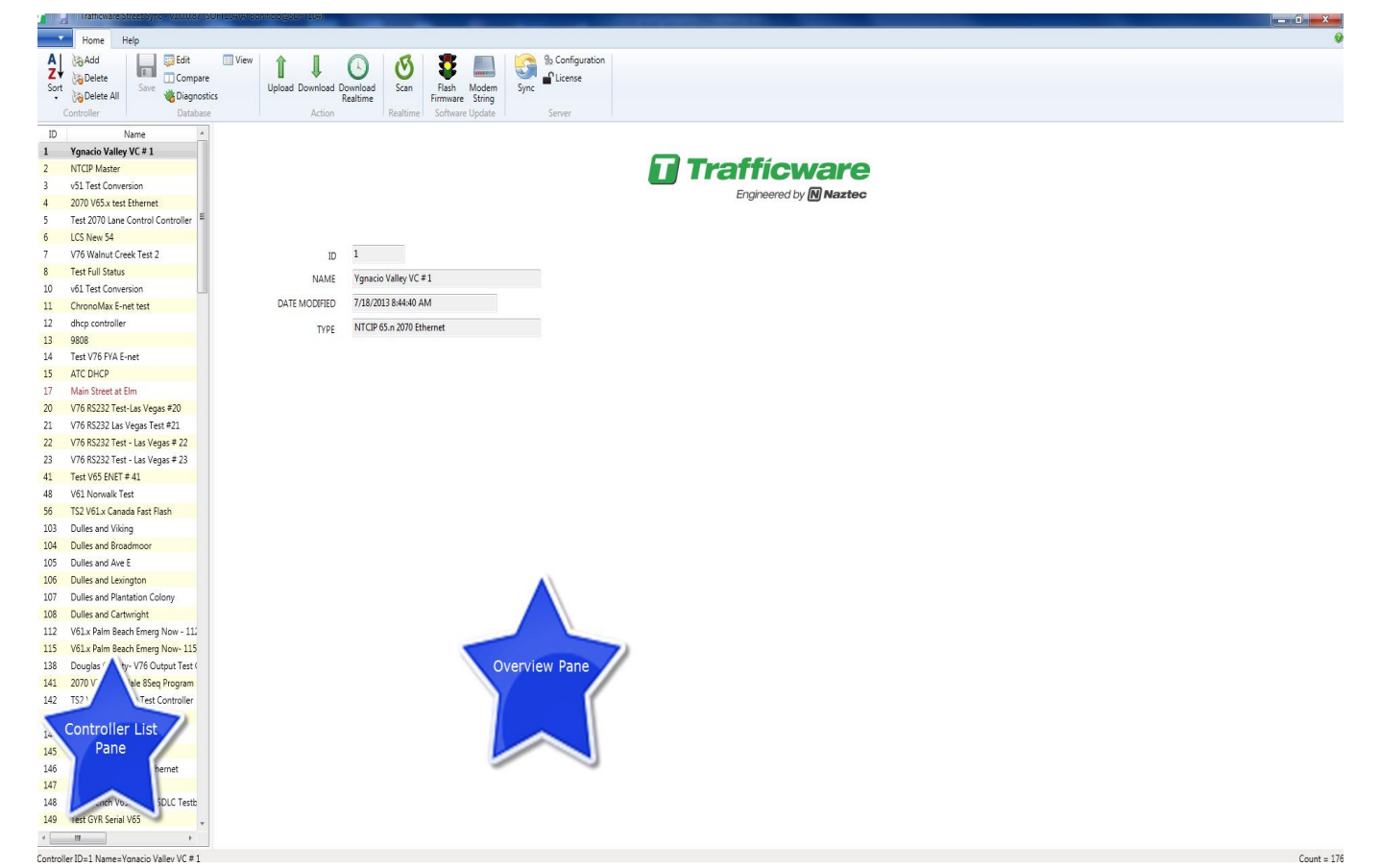


are > StreetSync > Bexar County > Data

Date modified	Type	Size
11/14/2013 1:03 PM	PRM File	19 KB
11/14/2013 1:03 PM	PRM File	19 KB
11/14/2013 1:03 PM	PRM File	19 KB
11/14/2013 1:03 PM	PRM File	19 KB
11/14/2013 1:03 PM	PRM File	19 KB
11/14/2013 1:03 PM	PRM File	19 KB
11/14/2013 1:03 PM	PRM File	20 KB
11/14/2013 1:03 PM	PRM File	19 KB
11/14/2013 1:03 PM	PRM File	19 KB
11/14/2013 1:03 PM	PRM File	19 KB
11/14/2013 1:03 PM	PRM File	19 KB
11/14/2013 1:03 PM	PRM File	19 KB
11/14/2013 1:03 PM	PRM File	19 KB
11/14/2013 1:03 PM	PRM File	19 KB
11/14/2013 1:03 PM	PRM File	19 KB
11/14/2013 1:03 PM	PRM File	19 KB
11/14/2013 1:03 PM	PRM File	19 KB
11/14/2013 1:03 PM	PRM File	19 KB
11/14/2013 1:03 PM	PRM File	19 KB
11/14/2013 1:03 PM	PRM File	19 KB
11/14/2013 1:03 PM	PRM File	19 KB
11/14/2013 1:03 PM	PRM File	19 KB

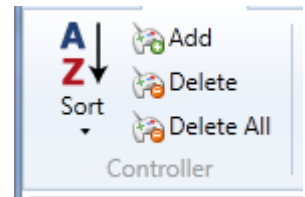
Initial Screen

When the app first starts, it will display the list of controllers in the system as shown above, As already stated, this list will be populated from the application server after syncing from the server. There are two sizable window panes that the user can view: the Controller List pane and the Overview pane.



Controller Section

The controller section menu allows the user to modify the controller database that StreetSync utilizes.



Add

If you add a new controller to the StreetSync database, the following screen will be displayed.

Important: If you create a new controller on the laptop, it will be highlighted as a different color in the controller List Pane and will not be part of the ATMS configuration.

 A screenshot of the 'Add New Controller' dialog box. It has 'Ok' and 'Cancel' buttons at the top. Below is a 'Controller Details' section with three fields: 'ID' (empty), 'Name' (containing 'Add new Controller'), and 'Type' (a dropdown menu). The dropdown menu is open, showing a list of controller types: NTCIP 50x TS2 RS232, NTCIP 61x TS2 Ethernet, NTCIP 65x 2070 RS232, NTCIP 65.n 2070 Ethernet, TR Master 61x, Chronomax, 10x C8 170 RS232, NTCIP n65x 2070 Ethernet, and 980 TS2 Sec. 61x Ethernet.

ID: Choose an ID that is not in the database. Valid ID numbers are 1-9999.

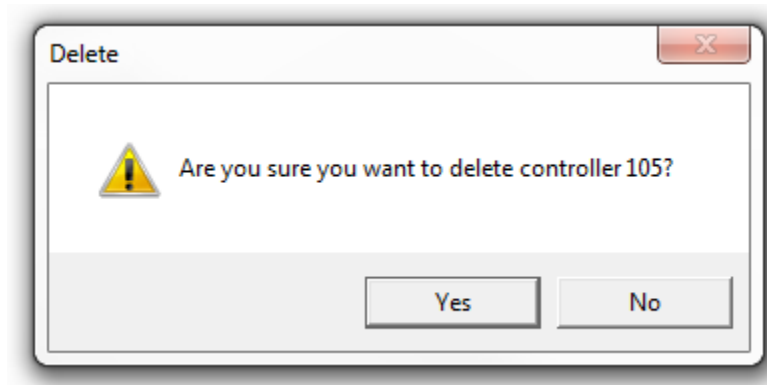
NAME: Give a description of this controller.

TYPE: this is the type of controller that you are communicating with. The types are listed below:

10x C8 170 RS232
 2070 LCS Ethernet
 2070 LCS Ethernet New
 50x TS2 RS232
 61x TS2 RS232
 980 TS2 Sec. 50x Ethernet
 980 TS2 Sec. 61x Ethernet
 NTCIP 50x TS2 RS232
 NTCIP 61x TS2 Ethernet
 NTCIP 61x TS2 RS232
 NTCIP 65.n 2070 Ethernet
 NTCIP 65x 2070 RS232
 NTCIP 70x 2070 Ethernet
 NTCIP 70x 2070 RS232
 NTCIP 76x ATC/2070 Ethernet
 NTCIP 76x ATC/2070 RS232
 NTCIP Ethernet MASTER 1.48

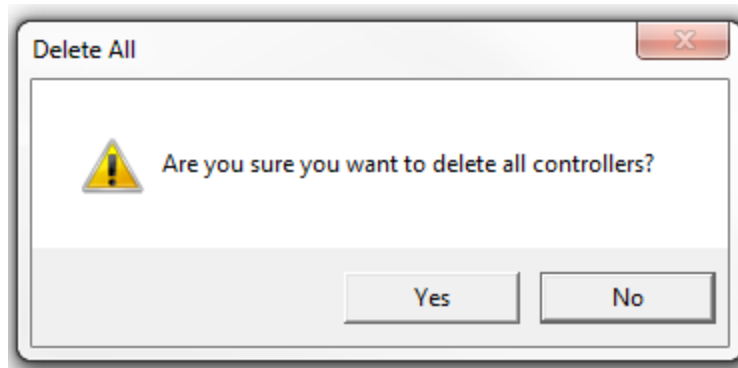
Delete

To delete a controller from the Street Sync Database, select it and select **Delete**. A confirmation screen will appear. By selecting **Yes**, the controller will be deleted.



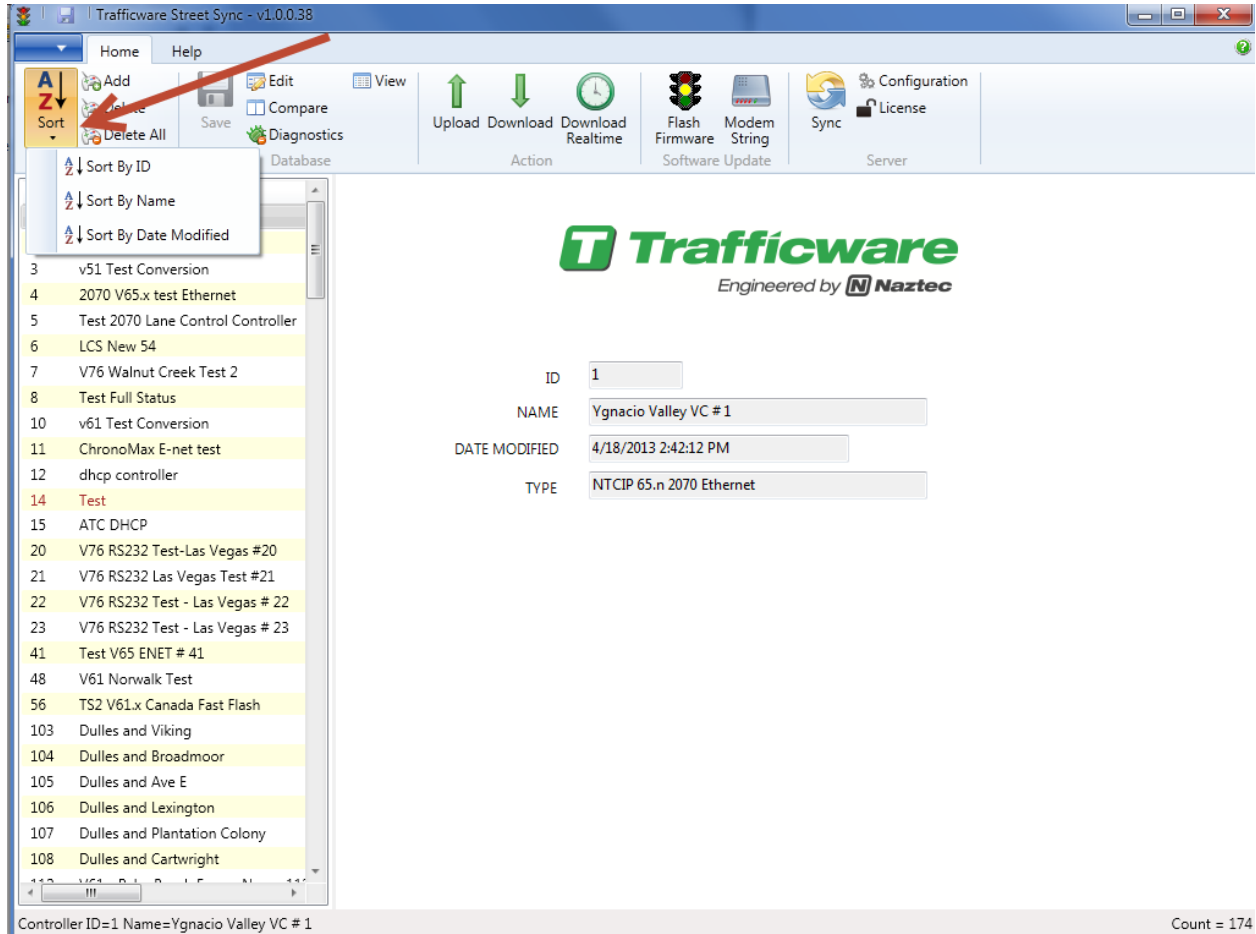
Delete All

This selection will delete all controllers from the StreetSync database. Again, a confirmation screen will appear.



Sort By ID, Sort By Name

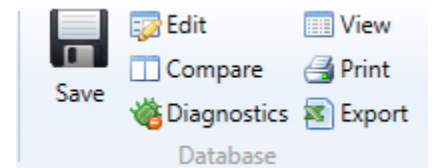
You can sort the database by ID Number, by controller name or by the date modified by this selection or by double-clicking on the column fields in the List pane.



Database Section

The Database Section allows the user to select a database and view, modify and save database parameters for each controller. Once a user selects a controller the user can access this section.

NOTE: The Database Section is enabled using a machine specific license key. Contact your Cubic | Trafficware representative on information on acquiring this capability.



View

This selection allows the user to view data. The info bar on the overview pane will be highlighted in gray when view is selected. StreetSync provides a database Filter for easy navigation to the specific database category of the selected database. The Filter categorizes the database according to the database categories provided in the controller. When a category is selected, the affiliated sub-categories will display in tabs within the window. If "All" is selected, every database tab will be displayed. The database tabs display and operate similar to Microsoft Excel.

Controller #14 - Phase Times and Options

Phase	Wal	Ped Clearanc	Min Gree	Passage	Max	Max	Yello	Red	Red Rever	Added Initi	Max Initi	Time Before Reduc	Cars Before Reduc	Time To Reduc	Reduce B
Phase 1	0	0	3	1	20	50	3.5	1.5	0	0	0	0	0	0	0
Phase 2	5	7	3	1	20	50	3.5	1.5	0	0	0	0	0	0	0
Phase 3	0	0	3	1	20	50	3.5	1.5	0	0	0	0	0	0	0
Phase 4	5	7	3	1	20	50	3.5	1.5	0	0	0	0	0	0	0
Phase 5	0	0	3	1	20	50	3.5	1.5	0	0	0	0	0	0	0
Phase 6	5	7	3	1	20	50	3.5	1.5	0	0	0	0	0	0	0
Phase 7	0	0	3	1	20	50	3.5	1.5	0	0	0	0	0	0	0
Phase 8	5	7	3	1	20	50	3.5	1.5	0	0	0	0	0	0	0
Phase 9	0	0	0	0	0	0	3.5	1.5	0	0	0	0	0	0	0
Phase 1	0	0	2	0	0	0	3.5	1.5	0	0	0	0	0	0	0
Phase 1	0	0	0	0	0	0	3.5	1.5	0	0	0	0	0	0	0
Phase 1	0	0	0	0	0	0	3.5	1.5	0	0	0	0	0	0	0

Table 1

Adv Warning / Auto Flash / Auto Flash Params / Channel Params / Channels Assignments / Channels Assignments Plus / MMU to Controller Mapping / MMU Permissives / Console Params / Detector Params / Ped Params / Overlap Alternate / OverlapB+ / Overlap Params / Overlap+ / Overlap Plus Params / Overlap Programming / Call Inhibit Redirect Alt / Phase Options Alt / Phase Times and Options / Phase Times+ Alt / Phase Times+ / Phase Times+ and Options+ / Phase Times Alt / SDLC Devices / Ring Input Map / Ring Sequences / TOD Parameters / SDLC Params / Unit Params

Filter: Controller

Controller ID=14 Name=Test V76 FYA E-net has been saved

Count = 178

Edit

This selection allows the user to edit and modify data. The info bar on the overview pane will be highlighted in blue when view is selected. StreetSync provides a database Filter for easy navigation to the specific database category of the selected database. The Filter categorizes the database according to the database categories provided in the controller. When a category is selected, the affiliated sub-categories will display in tabs within the window. If "All" is selected, every database tab will be displayed. The database tabs display and operate similar to Microsoft Excel.

Controller #14 - Phase Times and Options

Phase	Wal	Ped Clearanc	Min Gree	Passage	Max	Max	Yello	Red	Red Rever	Added Initi	Max Initi	Time Before Reduc	Cars Before Reduc	Time To Reduc	Reduce B
Phase 1	0	0	3	1	20	50	3.5	1.5	0	0	0	0	0	0	0
Phase 2	5	7	3	1	20	50	3.5	1.5	0	0	0	0	0	0	0
Phase 3	0	0	3	1	20	50	3.5	1.5	0	0	0	0	0	0	0
Phase 4	5	7	3	1	20	50	3.5	1.5	0	0	0	0	0	0	0
Phase 5	0	0	3	1	20	50	3.5	1.5	0	0	0	0	0	0	0
Phase 6	5	7	3	1	20	50	3.5	1.5	0	0	0	0	0	0	0
Phase 7	0	0	3	1	20	50	3.5	1.5	0	0	0	0	0	0	0
Phase 8	5	7	3	1	20	50	3.5	1.5	0	0	0	0	0	0	0
Phase 9	0	0	0	0	0	0	3.5	1.5	0	0	0	0	0	0	0
Phase 1	0	0	2	0	0	0	3.5	1.5	0	0	0	0	0	0	0
Phase 1	0	0	0	0	0	0	3.5	1.5	0	0	0	0	0	0	0
Phase 1	0	0	0	0	0	0	3.5	1.5	0	0	0	0	0	0	0
Phase 1	0	0	0	0	0	0	3.5	1.5	0	0	0	0	0	0	0

Table 1

Adv Warning / Auto Flash / Auto Flash Params / Channel Params / Channels Assignments / Channels Assignments Plus / MMU to Controller Mapping / MMU Permissives / Console Params / Detector Params / Ped Params / Overlap Alternate / OverlapB+ / Overlap Params / Overlap+ / Overlap Plus Params / Overlap Programming / Call Inhibit Redirect Alt / Phase Options Alt / Phase Times and Options / Phase Times+ Alt / Phase Times+ / Phase Times+ and Options+ / Phase Times Alt / SDLC Devices / Ring Input Map / Ring Sequences / TOD Parameters / SDLC Params / Unit Params

Filter: Controller

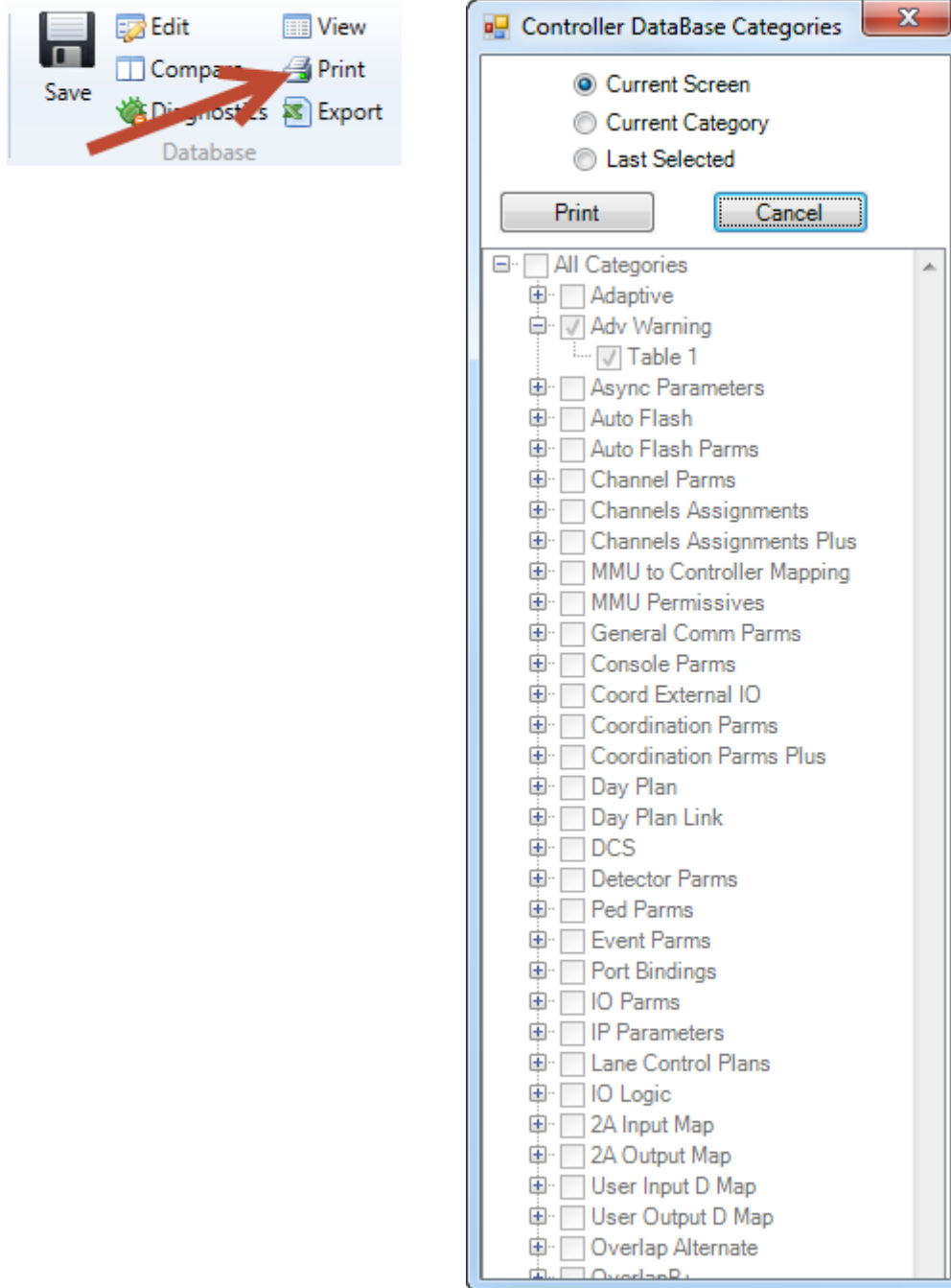
Controller ID=14 Name=Test V76 FYA E-net has been saved

Count = 178

NOTE: After editing data in a cell the user **MUST** click on another cell for the editing change to be saved to the StreetSync database.

Print

While you are still in the edit screen, the user may print out selected sheets via the **Print** command. This command will allow the user to select tabs to print out to a printer. When **Print** is selected a drop down menu appears as shown below.



The user can select which sheets to print out via the radio buttons on the top of the screen.

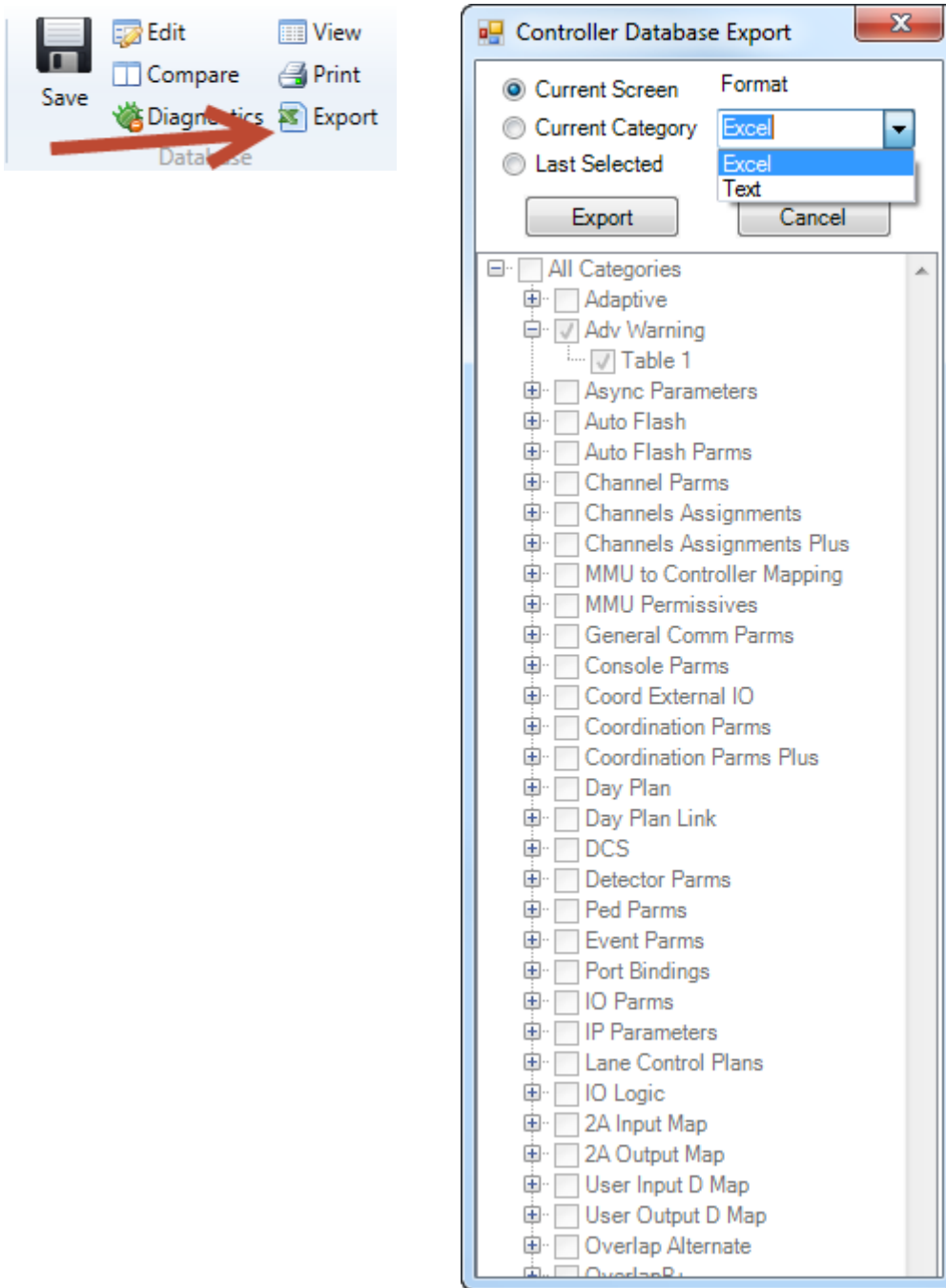
Current Screen will print the current screen being edited.

Current Category will print the current all the screens under the category that is being edited.

Last Selected will allow the user to select categories and/or screens to be printed including all screens.

Export

While you are still in the edit screen, the user may export selected sheets via the **Export** command. This command will allow the user to select tabs to export to an Excel or a text file. When **Export** is selected a drop down menu appears as shown below.



The user can select which sheets to export out via the radio buttons on the top of the screen.

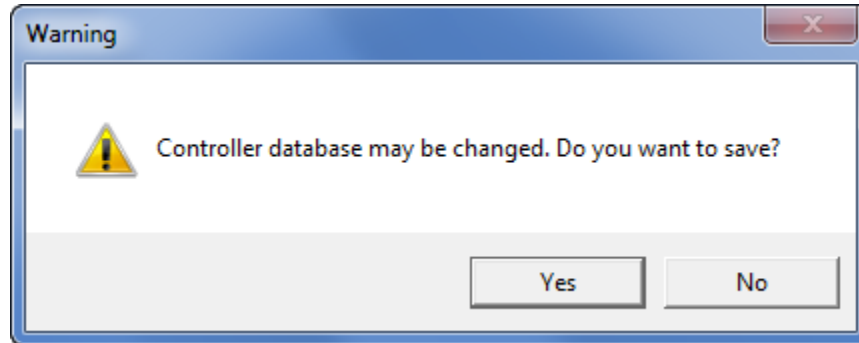
Current Screen will print the current screen being edited.

Current Category will print the current all the screens under the category that is being edited.

Last Selected will allow the user to select categories and/or screens to be printed including all screens.

Save

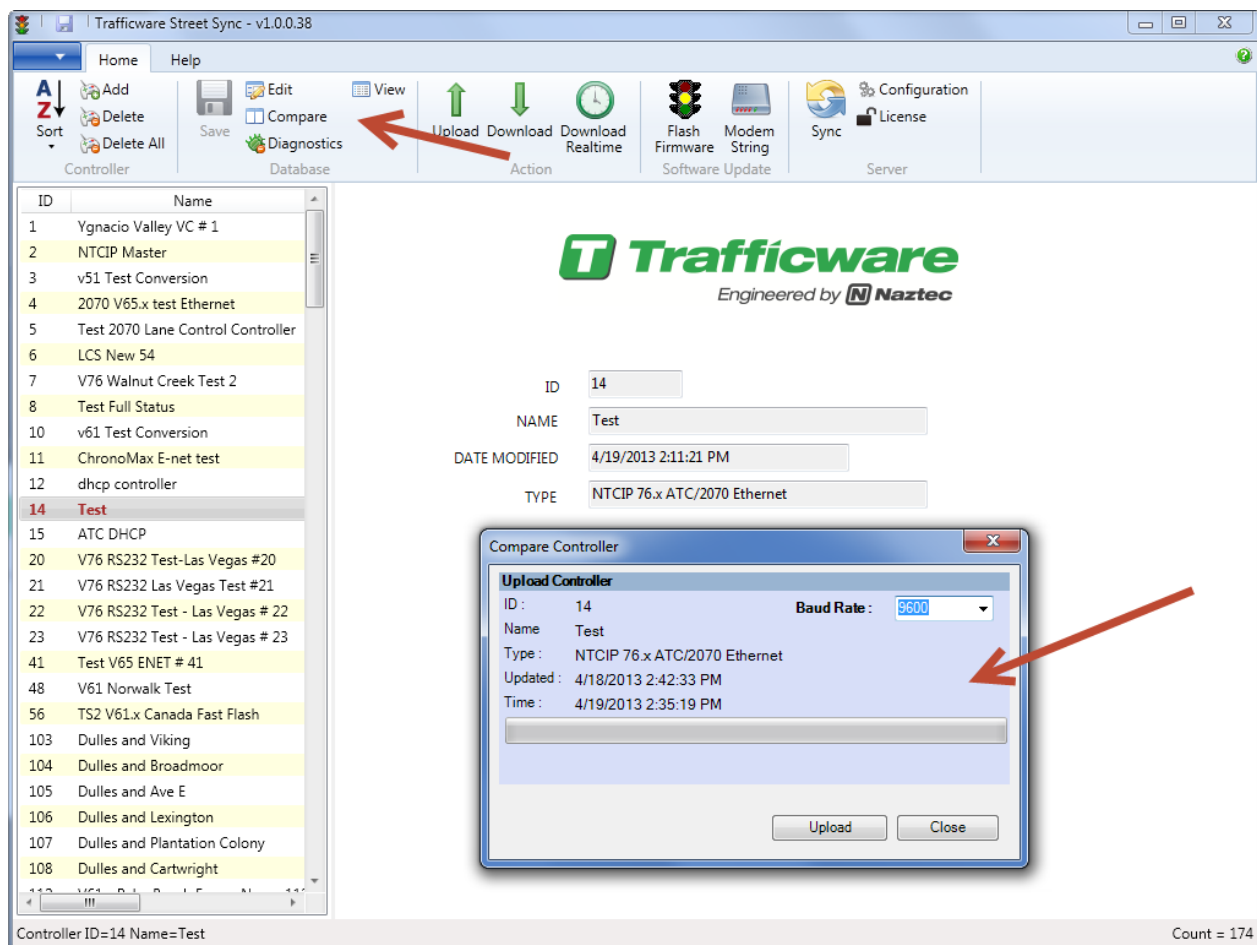
Once edits are completed, Save will write the changes to the database. After selecting Save, the following window will appear. Navigate to the Save Screen by clicking on another icon or menu item.



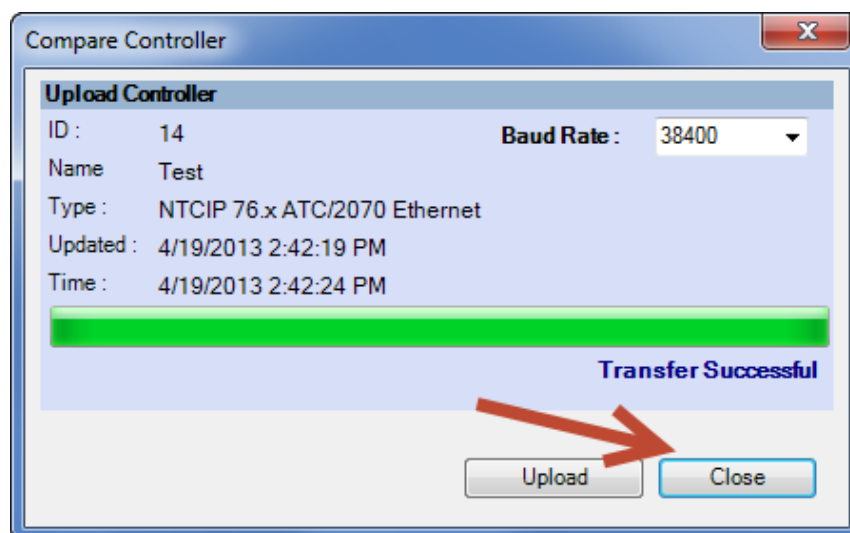
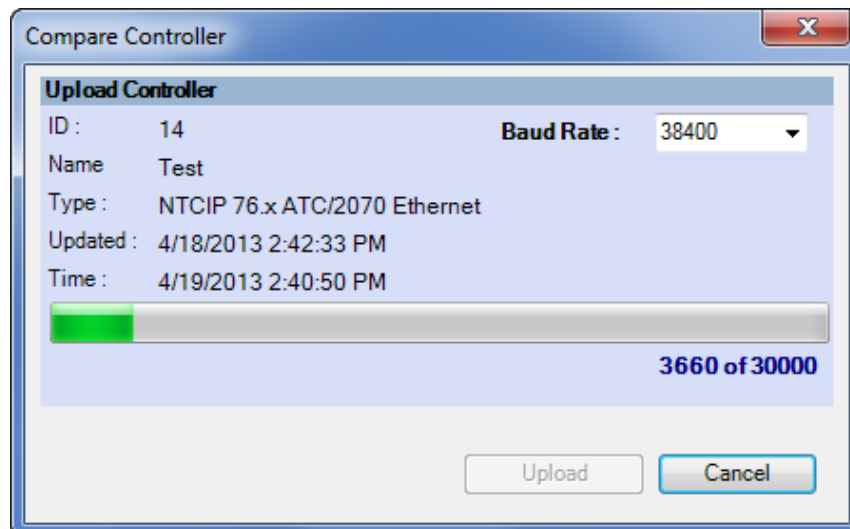
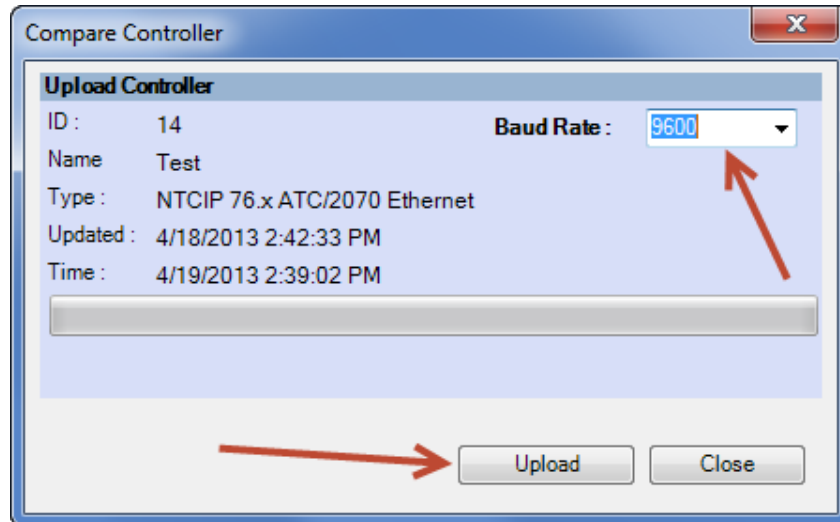
Selecting YES will save the database. All Data which is edited using StreetSync is saved on the /nazserv/data directory on the StreetSync PC. When editing is completed, the updated .prm file is then time stamped.

Compare

The user can compare the StreetSync database parameters with the controller's data. When accessing Compare, the Compare window will appear:



You can select the proper BAUD Rate to match your controller's serial communications speed via the drop down menu. Hitting Upload will begin the process of uploading data.



Once the upload is completed, select Close and the following will appear on the Overview Pane:

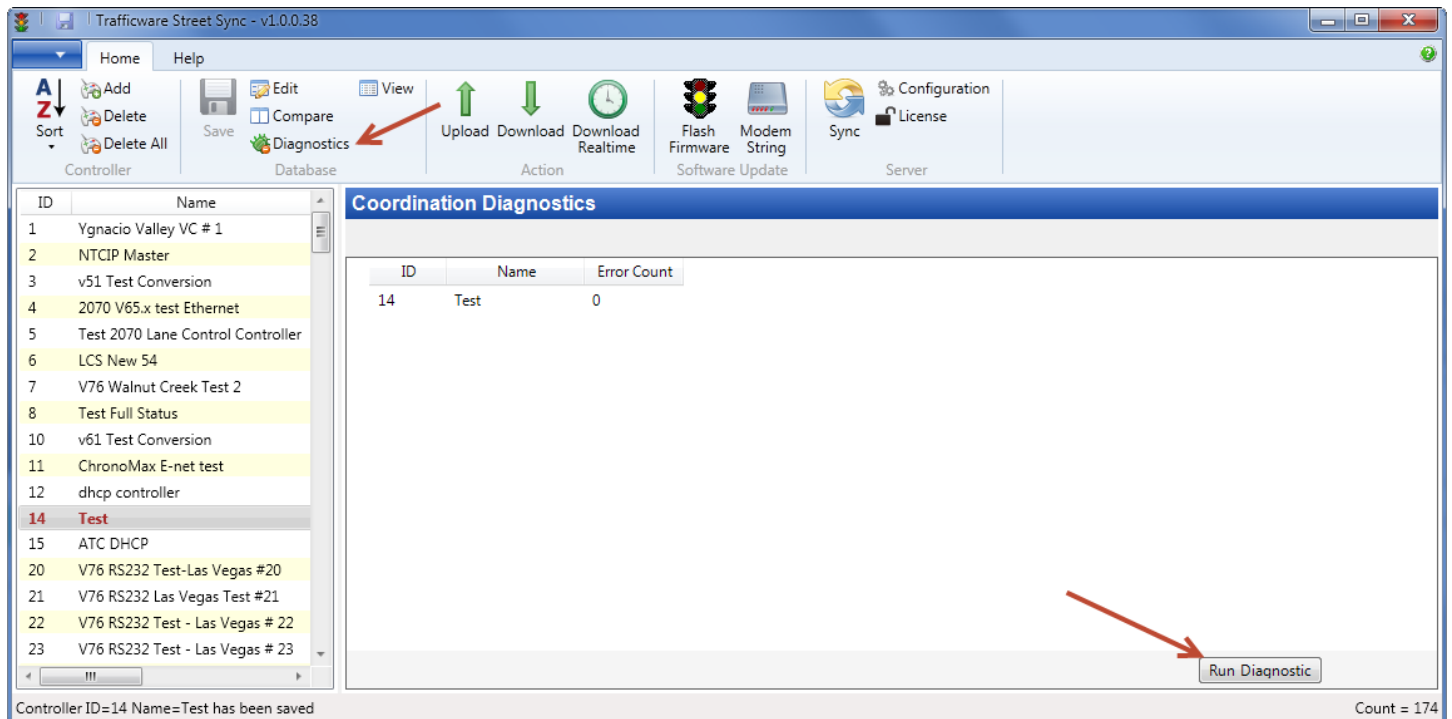
Parameter	ID 14 PRM	ID 14 UPL
1. Walk	0	0
1. Ped Clearance	0	0
1. Min Green	0	5
1. Passage	0	1
1. Max1	0	25
1. Max2	0	50
1. Yellow	0	3.5
1. Red	0	3.5
1. Red Revert	0	0
1. Added Initial	0	0
1. Max Initial	0	0
1. Time Before Reduce	0	0
1. Cars Before Reduce	0	0
1. Time To Reduce	0	0
1. Reduce By	0	0
1. Min Gap	0	0
1. Dynamic Max Limit	0	0
1. Dynamic Max Step	0	0
1. Startup	NONE	RED
1. Enable	OFF	ON
1. Auto Entry	OFF	OFF
1. Auto Exit	OFF	OFF
1. Non Act1	OFF	OFF
1. Non Act2	OFF	OFF

Differences are easily located and identified between the StreetSync database (PRM) and the uploaded database from the controller (UPL). Database differences are shown by color coding each database category tab and corresponding database parameter in **RED**. This will occur when a difference is present between the database types.

The user can make note of these differences and edit the database if needed.

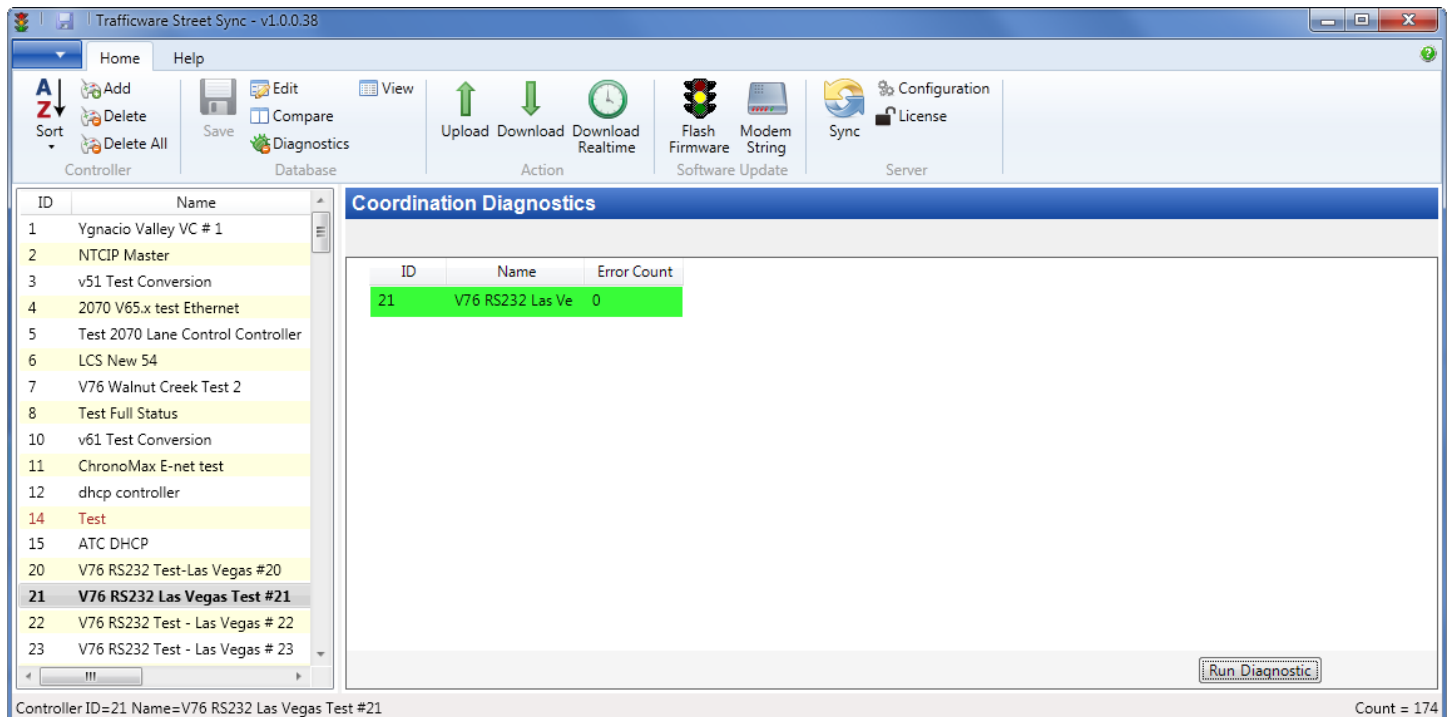
Diagnostics

The Coordination Diagnostics feature enables the user to run coordination database checks prior to download or by uploading an active database to run a diagnostics from ATMS. Users can run diagnostics on databases from StreetSync. Once this is selected, the following screen will be shown.



Select Run Diagnostics to run coordination diagnostics.

If the database passes the diagnostics check, the controller line will be highlighted GREEN as shown below



If a database does not pass the diagnostics, it will highlighted in RED and each individual error will be described. In the picture below, the database has been found with an error.

Home

Help

Sort

Controller

Add

Delete

Delete All

Save

Compare

Diagnostics

View

Database

Upload

Download

Download Realtime

Flash Firmware

Modem String

Software Update

Sync

Configuration

License

Server

ID	Name
1	Ygnacio Valley VC # 1
2	NTCIP Master
3	v51 Test Conversion
4	2070 V65.x test Ethernet
5	Test 2070 Lane Control Controller
6	LCS New 54
7	V76 Walnut Creek Test 2
8	Test Full Status
10	v61 Test Conversion
11	ChronoMax E-net test
12	dhcp controller
14	Test
15	ATC DHCP
20	V76 RS232 Test-Las Vegas #20
21	V76 RS232 Las Vegas Test #21
22	V76 RS232 Test - Las Vegas # 22
23	V76 RS232 Test - Las Vegas # 23

Coordination Diagnostics

ID	Name	Error Count
14	Test	2

Warning: Limited Diagnostics are run for controllers in USER MODE

Error : Phase Split Validation - Force Mode

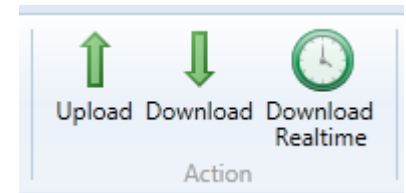
Run Diagnostic

Controller ID=14 Name=Test has been saved

Count = 174

Action Section

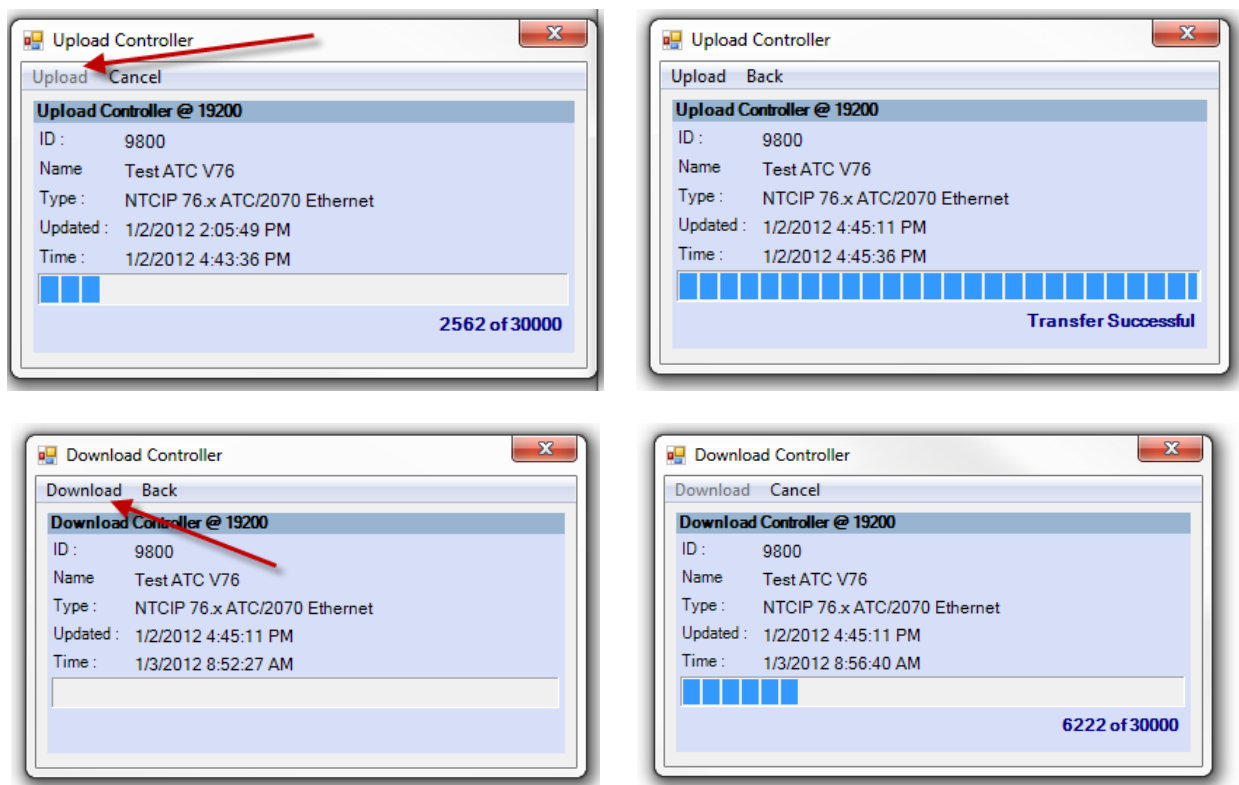
The Action menu will appear in the lower-left portion of the display. Sync operation is considered a “static” action, meaning that it is enabled whether or not a controller is selected. The other actions are “instance” actions, meaning that they are only enabled when a controller is selected.



Upload / Download

The Upload / Download screen works the same way as the existing ATMS Partner screen. The user selects a controller from the list, and then chooses the **Upload** or **Download** menu item. The app then displays the screen depicted below, indicating the selected controller. The user may then click either the **Upload** or **Download** menu item to transfer data between the device and the controller.

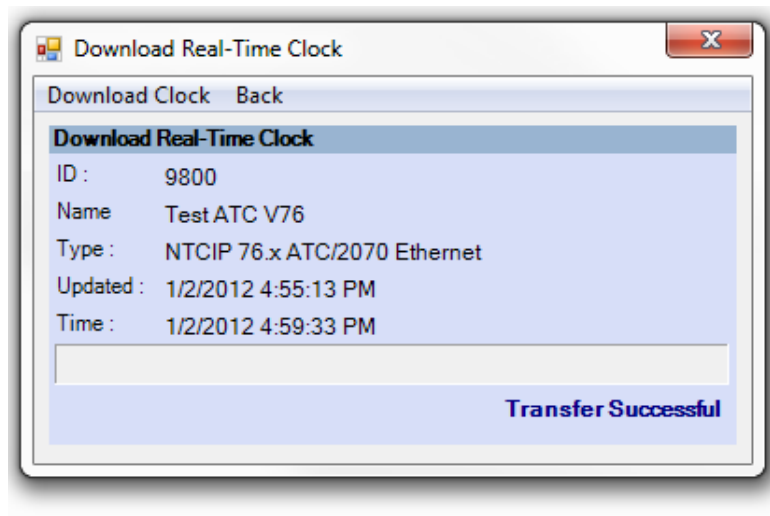
A screen will appear to allow the user to begin the Upload or Download. Select the action from the menu bar and the upload/download process will occur. A progress bar indicating how much of the laptop data has been transferred from (upload) or to (download) the controller. The user may cancel the operation at any time. When the Synchronization is complete, the progress bar displays **Transfer Successful**.



Please note that both Upload and Download overwrite the .PRM file in the StreetSync Database.

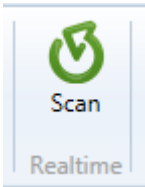
Download Real-Time

The Download Real Time screen works the same way as the existing ATMS Partner screen. The user selects a controller from the list, then chooses **Download Real Time** menu item. The app then displays the screen depicted below, indicating the selected controller. The user may then click the **Download Clock** button to transfer time data between the device and the controller. When the Synchronization is complete, the progress bar displays **Transfer Successful**.



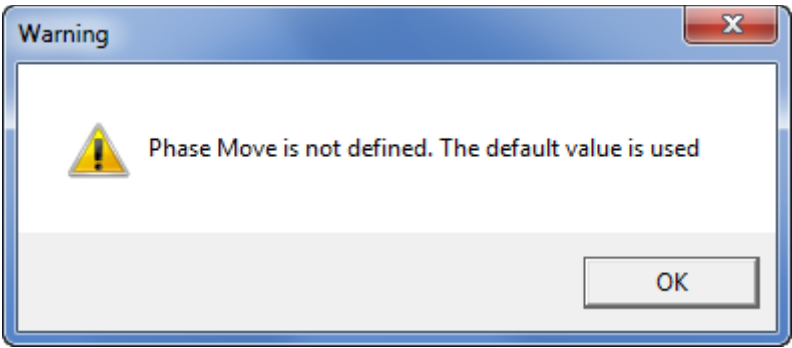
Realtime Section

The Real time section allows the user to scan a connected controller to view Red/Yellow/Green status



Scan

After selecting the intersection and connecting it to StreetSync the user can run a scan screen. The scan screen layout is dependent upon the ATMS setting known as *Edit Turn Phase/Directions*. If this is programmed in ATMS for the intersection that you are connected to the scan screen will be laid out as per this program. If *Edit Turn Phase/Directions* is not set then the following message will appear and a default screen is displayed.



After hitting OK a scan background will occur like the default on below.

	1	2	3	4	5	6	7	8	9	10	11	12	13	14	15
Overlap	<input checked="" type="checkbox"/>	<input checked="" type="checkbox"/>	<input checked="" type="checkbox"/>	<input checked="" type="checkbox"/>	<input checked="" type="checkbox"/>	<input checked="" type="checkbox"/>	<input checked="" type="checkbox"/>	<input checked="" type="checkbox"/>	<input checked="" type="checkbox"/>	<input checked="" type="checkbox"/>	<input checked="" type="checkbox"/>	<input checked="" type="checkbox"/>	<input checked="" type="checkbox"/>	<input checked="" type="checkbox"/>	<input checked="" type="checkbox"/>
Call	<input type="checkbox"/>	<input type="checkbox"/>	<input type="checkbox"/>	<input type="checkbox"/>	<input type="checkbox"/>	<input type="checkbox"/>	<input type="checkbox"/>	<input type="checkbox"/>	<input type="checkbox"/>	<input type="checkbox"/>	<input type="checkbox"/>	<input type="checkbox"/>	<input type="checkbox"/>	<input type="checkbox"/>	<input type="checkbox"/>
Ped	<input checked="" type="checkbox"/>	<input checked="" type="checkbox"/>	<input checked="" type="checkbox"/>	<input checked="" type="checkbox"/>	<input checked="" type="checkbox"/>	<input checked="" type="checkbox"/>	<input checked="" type="checkbox"/>	<input checked="" type="checkbox"/>	<input checked="" type="checkbox"/>	<input checked="" type="checkbox"/>	<input checked="" type="checkbox"/>	<input checked="" type="checkbox"/>	<input checked="" type="checkbox"/>	<input checked="" type="checkbox"/>	<input checked="" type="checkbox"/>
Ped Call	<input type="checkbox"/>	<input type="checkbox"/>	<input type="checkbox"/>	<input type="checkbox"/>	<input type="checkbox"/>	<input type="checkbox"/>	<input type="checkbox"/>	<input type="checkbox"/>	<input type="checkbox"/>	<input type="checkbox"/>	<input type="checkbox"/>	<input type="checkbox"/>	<input type="checkbox"/>	<input type="checkbox"/>	<input type="checkbox"/>

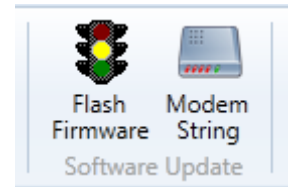
Ring	Min	Max	Ped
1			
2			
3			
4			

Pattern:	Cycle:	Ph Opt:
TBC:	Offset:	Ph Time:
Local:	Splits:	DetGrp:

The scan screen will display Phase Red/Yellow/Green status, timing, Channel Outputs and coordination data so that the user can check the intersection from his PC while verifying field data.

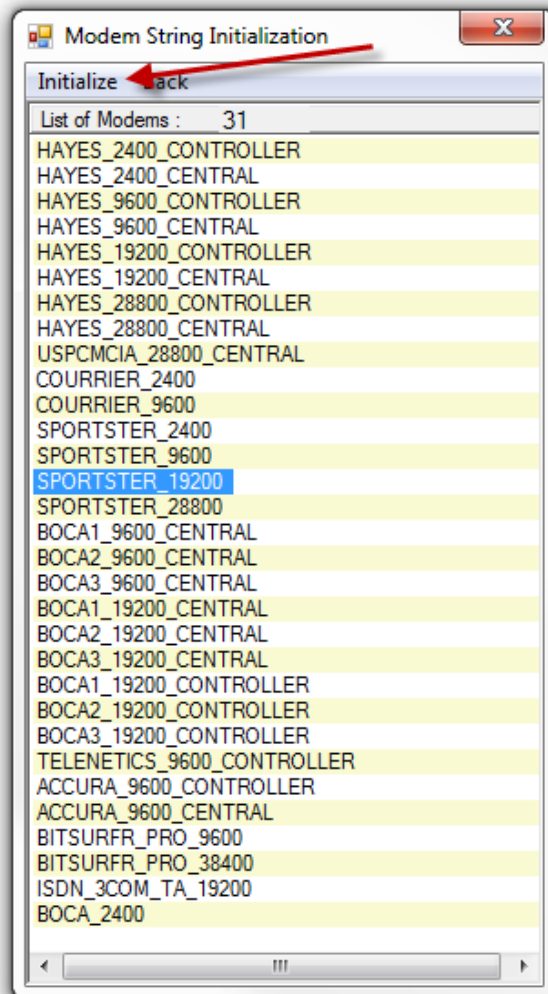
Software Update Section

The software Update sections allows the user to Flash firmware to a 980 NEMA controller or a Cubic | Trafficware MMU as well as interface to dial modems to set up communication strings.



Modem String Initialization

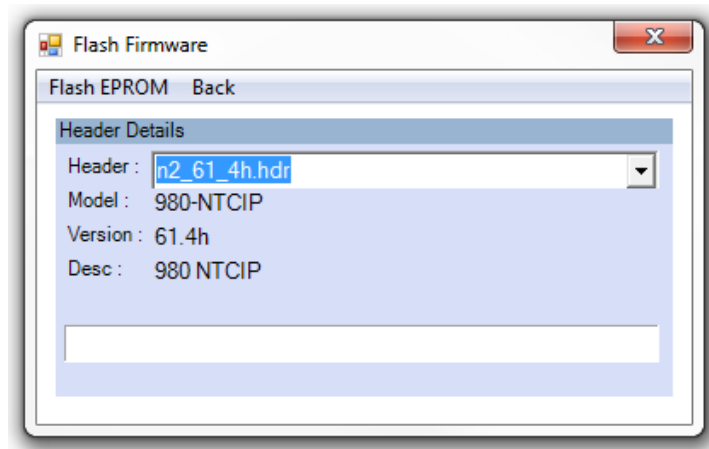
The user can connect the laptop to a modem to initialize it with setup data if needed. Select the **Modem String** Action and chose the modem type that you plan to initialize.



By selecting **Initialize** and connecting the laptop to your modem, StreetSync will download a setup string to the modem.

Flash Firmware

For Cubic | Trafficware TS2 controllers and Cubic | Trafficware MMU's firmware can be upgraded and installed via StreetSync. Selecting **Flash Firmware** will bring up the following screen as shown below.



Click on the pull down menu to select the firmware header file. A list will appear, with the available Proms to download. Select the desired EPROM. Finally, Select **FlashEPROM** from the menu to begin the download.

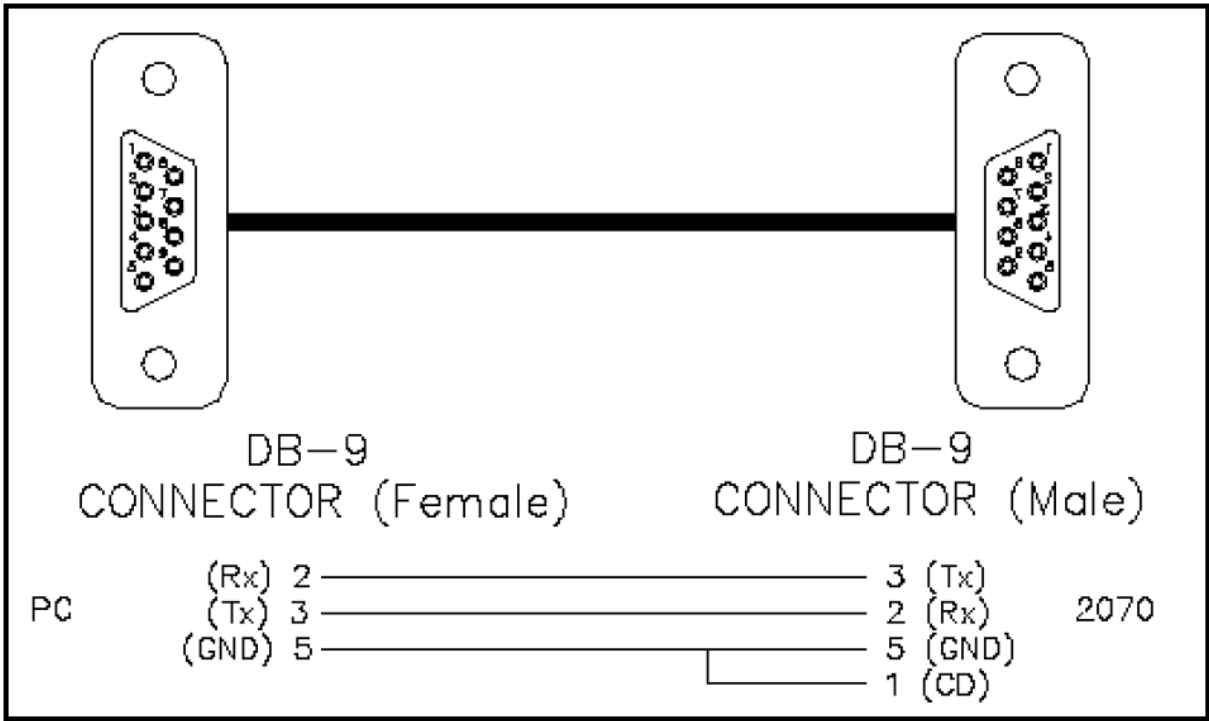
The header files must be located on the ATMS server under the directory: **...Naztec/Nazserv/Downprom**

If you are using a standalone version of StreetSync, you can copy the header files to the following Directory: **...ProgramData\Trafficware\StreetSync\Sugarland2\Downprom**

Hardware considerations

PC to 2070 Cable Setup

The following is a diagram outlining the pin-outs for a cable connecting the 2070 C50 connector to the comm. port of your PC or laptop.



NEMA TS2 Communications Port Cable setup

System (P-A)				System Up (P-A)				System Down (P-B)			
Pin	Function	Pin	Function	Pin	Function	Pin	Function	Pin	Function	Pin	Function
1	Earth Ground	7	Signal Ground	1	Earth Ground	7	Signal Ground	1	Earth Ground	5	CTS
2	TX	8	DCD	2	TX	8	DCD	2	TX	7	Signal Ground
3	RX	20	DTR	3	RX	20	DTR	3	RX	8	DCD
4	RTS	24	Enable	4	RTS	24	Enable	4	RTS	20	DTR
5	CTS	25	Logic Ground	5	CTS	25	Logic Ground				

NOTE: Additional Hardware setup information can be found in TecNote 3033 as published on Cubic | Trafficware’s Freshdesk Documentation Site. Contact your Cubic | Trafficware representative for further information.